

Parents in Wilmington have a detailed relationship with flooring. The week starts off evolved with sandy feet from Wrightsville, pivots to a spaghetti incident on Tuesday, segues into a slime explosion by using Thursday, then wraps with a Lego ambush on Saturday morning. The most efficient carpet and flooring choices allow young ones be teenagers devoid of making adults really feel like permanent custodians of chaos. The trick is matching the top materials to the way your relatives in fact lives, then looking native execs who get it and stock items that maintain up.

This manual folds in what I actually have noticed in actual properties along the coast, what installers whisper when prospects are out of earshot, and what I actually have discovered after observing carpet age inner households in which sippy cups have a 50 percent fulfillment price. If you are comparing carpet stores Wilmington NC mothers and fathers confidence, or scouting tile outlets Wilmington NC households swear by means of, you can to find functional selections, charge levels, and inquiries to ask formerly any individual rolls a single yard of fabric off a truck.

What “youngster-friendly” essentially capacity for flooring in coastal Carolina

The Cape Fear weather adds a chapter to each and every flooring story. Humidity hikes up in summer time, sand sneaks in yr-circular, and typhoon season [carpet stores wilmington nc](#) exams the seams of anything that expands and contracts. For households, add the friction of rolling toys, pet claws, juice containers on a wobble direction from kitchen to sofa, and spontaneous science experiments. Kid-pleasant ground demands to take up all that with no quitting early.

Durability things, yet so does repairability. I like components you're able to spot refreshing, switch in panels or planks with out tearing up the total room, and vacuum with out rage. Safety topics too. Floors with a bit grip lower wipeouts whilst socks meet speed. Soft landings, low VOC adhesives and pads, and fibers that do not trap every speck of mud round out the record.

A brief map of Wilmington’s floor ecosystem

If you're seek floors retailers Wilmington NC or ground shops in Wilmington North Carolina, you might be rather triangulating three types of native companies.

- Full-line Wilmington floors services that care for carpet, hardwood, LVP, laminate, tile, and commonly quarter rugs, with layout guide and setting up crews less than the comparable roof. These are the places to evaluate youngster-trustworthy carpet next to waterproof planks at the same time as your youngster examines each sample board like it holds country secrets and techniques.
- Wilmington tile stores and tile department shops Wilmington NC that lean difficult into porcelain, ceramic, and stone. If you dream in penny rounds and herringbone, these are house base, and plenty of tile enterprises in Wilmington NC now inventory non-slip, rectified porcelain that feels like driftwood planks or aged limestone, which hides sippy-spill streaks with grace.
- Outlets and warehouses. Search phrases like Wilmington floor warehouse, ground stores in Wilmington NC, or floors outlet Wilmington NC many times lead to higher inventories, quit-of-lot bargains, and instant ship features. Great for budget-sensitive projects or leases, assuming you continue to pair fabrics with spouse and children-evidence overall performance.

The model rosters switch, however possible find a widespread unfold: stain-resistant nylon and triexta carpets from the colossal generators, resolution-dyed polyester traces at a sharper fee, water-proof vinyl plank with upgraded wear layers, click laminates that snicker at dents however nevertheless desire moisture caution, and a constant push of porcelain tile with grippy textures that do not consider like sandpaper.

Surfaces that make circle of relatives life simpler

If I needed to guess the grocery funds on what is going to survive five years in a Wilmington spouse and children room with two youth and a puppy, I could opt for a quality LVP within the heaviest visitors zones, then bring in carpet as a strategic delicate layer in bedrooms and play corners. Tile gets bonus factors in splash zones and anyplace sand is a repeat visitor. Here is how that shakes out in on daily basis life.

Carpet that resists stains, foot traffic, and the occasional Popsicle meltdown

Not all carpet behaves the related. The fiber, twist, or even the form of dye inform you how it'll age.

- Nylon with a effective stain therapy holds its form in hallways and on stairs. Think dense twist or a good loop made for family rooms. With nylon, seek bigger twist numbers and face weights above 40 oz. for those who would like cushion and toughness.
- Triexta, many times branded as PTT or SmartStrand, bakes stain resistance into the fiber in preference to coating it. That concerns after you clear up whatever purple at eleven p.m. after discovering it at 10:59 p.m. Triexta resists the “blooming” appear that turns plush into a mashed container over the years.
- Solution-dyed polyester is the budget hero for bedrooms and playrooms. The shade runs via the fiber, which takes the terror out of bleach spots and daylight. It will no longer tournament nylon in healing and spring, so follow denser textures and stay away from a tall, loose frieze in heavy-traffic rooms.

Pile fashion counts. For families, a short, dense reduce pile hides footprints, vacuums swift, and does no longer entice as an awful lot grit. Loops glance crisp but can snag with puppy claws or plastic toys with seams. Berber is appropriate in conception, less amusing after one snag runs like a stocking.

Backing and pad topic as a whole lot as fiber. A moisture-barrier pad catches accidents formerly they soak the subfloor, and an antimicrobial treatment enables while lifestyles will get damp. Ask for a pad round eight pounds density with at least 3/8 inch thickness for comfort with no turning stairs into trampolines.

For Wilmington carpet retailers, carry up coastal humidity and sand explicitly. You want backing that can now not delaminate if a dehumidifier fails in July, and also you want installers who seal seams tightly. In rooms the place chairs roll or toys thud, insist on power stretching in the time of setting up to stop ripples.

LVP and laminate wherein chaos concentrates

Luxury vinyl plank legislation in spouse and children zones. It clicks in combination, shrugs off splashes, and laughs at beach sand. Look for a thick wear layer, 20 mil or upper, if scooters or office chairs roam. A inflexible middle, constantly SPC, controls enlargement in our humidity. A quieter underlayment retains the distance from echoing like a racquetball court docket.

Laminate has develop into shockingly brilliant at watching like picket, and more moderen waterproof editions control spills if you wipe throughout the corporation's window. It is harder towards denting than many vinyls, but status water continues to be a danger except you buy a complete water-resistant line. If your childrens deal with the kitchen like a pool deck, vinyl nonetheless holds the crown.

Tile in which water rules

Porcelain tile wins in baths, mudrooms, laundry spaces, and entryways where moist toes collect. In a coastal metropolis, it additionally makes experience in first-ground family members rooms and sunrooms in which storms try the door gaskets. At tile shops Wilmington NC customers will see a sea of chances. Prioritize slip resistance with a bigger DCOF ranking for floors, mainly if children sprint from sprinklers to snacks. Textured matte finishes conceal smears and crumbs stronger than glassy sheens.

Grout strains are the quiet villain. Go with a narrower joint, and ask for a prime-overall performance grout, many times polymer-converted or epoxy-established, which resists staining and scrubbing fatigue. In salt air, epoxy grout is like inserting a reveal door on a submarine, one could not be chasing shadow stains two years in.

Engineered timber for the seem, with guardrails

Yes, one could install timber in relations houses, but do now not fake that spilled apple juice and summer time humidity will no longer attempt to bully it. Engineered picket does enhanced than reliable on this weather way to its layered structure. Choose a matte, wire-brushed end to hide scratches, and hold just a few further boards for long term swaps. If your heart says oak but your pockets says “not back,” wood-look porcelain or top-conclusion LVP from wooden floors stores Wilmington NC locals put forward provides you the image without the panic.

How to retailer clever, no longer just pretty

Flooring is a system, now not only a pattern plank. A stroll thru ground shops in Wilmington North Carolina is going better if you deliver a small list of wants and non-negotiables, a number of smartphone graphics of your rooms in daylight hours and at night, and a sensible budget according to square foot consisting of set up and floor prep. Subfloors in older coastal buildings can surprise you, and read coating or leveling provides payment and time.

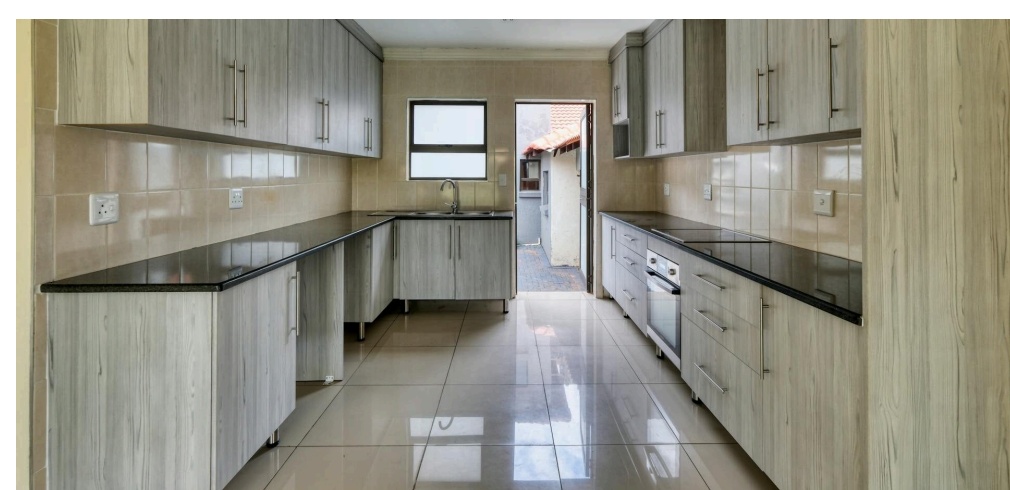
Ask salespeople to turn you kid-confirmed lines, not simply new releases. Steer conversations to warranty specifics for stains, water, and puppy accidents. If you travel a few Wilmington flooring establishments, evaluate the similar classes apples to apples, a 20 mil vinyl wear layer versus a 12 mil, a 48-ounce nylon carpet versus a 30-ounce polyester. If a sample board looks suspiciously reasonably-priced, cost the backing, pad compatibility, and regardless of whether it's first first-class or a closeout devoid of full assurance.

Color is a tactical choice. Mid-tone, warm neutrals hide crumbs better than high-assessment cool grays that tutor each lint mote. Flecked or heathered carpets disguise site visitors paths, and plank styles with refined edition cover the day five of sea coast week more beneficial than flat, steady prints.

Where the rubber ducky meets the subfloor, set up is everything

I have obvious top class carpet go lumpy seeing that a crew skipped drive stretching, and I actually have viewed builder-grade LVP carry out like a champ on a perfectly prepped slab. In coastal humidity, gaps and buckles will not be beauty error, they're invitations for sand and moisture to go in. Good floors enterprises Wilmington locals advise will degree moisture, level inside certain tolerances, and acclimate supplies as directed. A day or two of acclimation will not be a fable, that is prevention.

On stairs, recall a separate stair runner or a denser carpet spec than you utilized in bedrooms. Stairs take a pounding, and a good, low pile resists matting. For playrooms, ask installers to warmth-bond seams the place doable and align pile direction to curb shading stripes.



If you are searching a Wilmington ground warehouse for a quick pickup, have a plan for who handles transitions, undercutting door jambs, and baseboard touch-ups. A freelance installer with sturdy references can nevertheless provide suitable-tier outcome, yet you need to vet them like you will a daycare. Ask for beforehand-and-after pictures of stairs, door transitions, and tile showers, the elaborate bits that separate professionals from pretenders.

Kid-pleasant with the aid of room, with genuine alternate-offs

Every condominium negotiates space in a different way, yet sure styles dangle regular on this city.

Living rooms choose resilience without shouting “playroom.” LVP or engineered picket units a calm historical past, then a certain section rug creates a soft region for blocks. Choose rugs with resolution-dyed fibers and low pile, effortless to shake at the porch. If you decide upon wall-to-wall carpet, decide upon a lower pile around 45 to 60 ounces face weight, not plushy sufficient to swallow toy wheels, dense ample to spring again.

Bedrooms present consolation. Here, cost-pleasant solution-dyed polyester makes sense for those who vacuum weekly and place stroll-off mats at room entries. For children, who're in most cases crumb factories with headphones, triexta could be a sanity saver.

Playrooms take the so much imaginative abuse. Carpet tiles shine right here, and plenty Wilmington carpet retail outlets both inventory them or can order temporarily. You can pry up man or woman tiles after a paint spill and drop a

alternative with minimum drama. If you move LVP, upload an reasonably-priced foam underlayment rated for vinyl to maintain from those tumbling type reenactments.

Kitchens and dining locations remain tile or LVP u . s .. Dropped utensils, splashes, and chair legs colliding with surface at an perspective flip wood floors into an extended sigh. If you insist on wood, bump up the end toughness and lay down felt pads like you're wallpapering the chair feet.

Bathrooms deserve porcelain with a matte end and a grout color practically the tile tone. Kids will miss, splash, and experiment with bath bombs that may as good be powdered dye, so set your self up for light scrubs. If you need heat, upload a bathtub mat or radiant warm below tile. Wilmington tile retailers can dimension radiant mats room by means of room, a modest luxurious that makes iciness mornings civil.

Mudrooms or drop zones operate as airlocks for the dwelling. Porcelain tile with a rougher texture supplies traction when sandals are available in rainy. Hook a shelf for footwear and a rinse tray for boots and seaside toys. You will thank your self after the 1st summer season thunderstorm.

The coastal culprit you can't see: indoor air quality

Kids spend greater time as regards to flooring, crawling, rolling, and examining stretched out like cats. Materials and adhesives with low VOCs keep complications and sneezing at bay. Many mainstream manufacturers certify to Green Label Plus for carpet and FloorScore for rough surfaces. Ask explicitly at ground stores Wilmington NC parents common, and press for low-VOC adhesives and sealers. If the shop clerk says “all adhesives are the same,” in finding an extra salesperson.

Vacuuming cadence matters greater than fiber fashion while you are living on the floor. A potent vacuum with a top-adjustable beater bar and a HEPA filter pulls sand and grit beforehand it saws through carpet fibers. For LVP and tile, a cushy broom and a microfiber mop do the day after day work; depart the steam mop inside the closet on vinyl to preclude cooking the seams.

Money, math, and while to spend it

Pricing strikes with manufacturer, structure, and availability, but those Wilmington-neighborhood ballparks assistance with planning:

- Entry to midgrade solution-dyed polyester carpet installed with classic pad levels more or less 2.50 to 4.50 funds in keeping with sq. foot. Step up to nylon or triexta with a moisture-barrier pad and you're more likely inside the 4.50 to 7.50 fluctuate, based on density and fashion.
- LVP spans a large discipline. Budget strains with thinner put on layers can beginning around 2 to 3 funds in keeping with rectangular foot for fabric, while sturdier 20 mil wear-layer items with more suitable cores and textures mostly land among 3.50 and six.50. Installed pricing relies upon on subfloor prep, stairs, and transitions, in the main finishing up in the four.50 to eight.50 diversity.

- Porcelain tile subject matter runs from 2 to eight cash in line with square foot for mainstream features, with setting up adding as tons or extra because of the prep, design, and grout fashion. Splash zones that want waterproofing membranes or heated flooring add to the tab.

The best possible spend for households is customarily invisible. A moisture barrier pad under carpet, upgraded grout within the bath, a thicker wear layer on LVP, and perfect surface leveling. Those line gadgets do not sing within the showroom, yet they shop you from purchasing once more too quickly.

What to invite for those who discuss with Wilmington flooring companies

This is the instant where a short listing supports. Hand it to the salesclerk, then allow them to lead you through suggestions that fit it.

- Which of your carpet strains are answer-dyed or have built-in stain resistance, and what are the face weights and twist phases?
- For LVP, what is the wear and tear layer thickness, center model, and assurance for residential water exposure and pets?
- How do you manner subfloor moisture testing and leveling for this dwelling? Can I see a sample report or checklist?
- What pads or underlayments do you pair with these materials, and are they moisture barrier and low VOC?
- If we have a downside at installing or year two, who do I call, and how do you handle provider tickets?

Local realities, small ameliorations that matter

A few conduct cut soreness formerly it starts. Place a walk-off mat at each and every outside door, and make it full-size sufficient that brief legs take as a minimum two steps on it. Shake or rinse these mats weekly in summer season. Vacuum carpets on a collection time table, no longer feelings, two times a week in heavy-use rooms. For vinyl and tile, a swift mud mop run nightly scoops up most of the sand that desires to flip conclude surfaces uninteresting. Put felt pads on chair legs, then change them after they flatten. Clip pet nails once a month and benefits with the fervor of a halftime reveal. And educate youngsters a 5-piece reset, 5 gifts to come back in which they belong in the past bedtime, a tiny act that helps to keep Lego drifts from grinding into fibers.

Finding the proper suit amongst Wilmington carpet retailers and beyond

If you are toggling among a number of Wilmington carpet stores, timber floors outlets Wilmington NC has sprinkled round the town, and the occasional floor outlet Wilmington NC buyers stalk for deals, decide structured on carrier intensity as a lot as price in keeping with foot. A save that schedules a site discuss with, assessments moisture, explains pad preferences devoid of jargon, and affords you a written scope for prep and transitions is well worth a small top class. If a warehouse has the exact product you favor at a more beneficial price, see if your preferred installer will work with purchaser-equipped drapery. Most will, with a clean notice on guaranty limitations.

For tile, lean on Wilmington tile retailers with robust inventory and a venture table that knows the distinction among a shower pan and a splash wall. Ask what number of shower rebuilds they see every one year from failed waterproofing, then stick with their process, now not the information superhighway's admired shortcut.

For families who lease on the sea coast or take care of short-time period rentals, sturdiness and immediate turnover are the whole thing. Neutral LVP with a 20 mil wear layer, mid-tone, paired with edge rugs you possibly can rotate two times a 12 months is the workhorse components. Keep a spare box of planks for speedy maintenance. In childrens' bedrooms, carpet tiles make turnover days less nerve-racking. Check with floor corporations Wilmington locals recommend for estate managers, they traditionally recognise which SKUs continue to be in inventory and which providers deliver fast.

A brief observe on sustainability that also survives a yogurt spill

Eco claims fad and fade, but some preferences simply lend a hand. Solution-dyed fibers use less water in coloring. Green Label Plus carpets and FloorScore onerous surfaces lessen indoor emissions. Underlayments comprised of recycled felt do a good activity lower than carpet whilst maintaining rubber smells out of small rooms. Tile lasts decades and does not off-gasoline, however it incorporates a increased set up footprint. The greenest stream is [carpet and flooring wilmington north carolina](#) installation merchandise which may not want changing in 3 years. Kids are difficult on flooring; changing them twice is worse for the wallet and the planet.

When the young people win, the condominium nevertheless can too

The objective shouldn't be a showroom. It is a dwelling in which forts upward push and fall, technological know-how projects fail with out staining your Saturday, and worn out adults can vacuum as soon as, not 4 instances. Wilmington's market provides you sufficient option between floors shops Wilmington NC, tile retail outlets Wilmington NC, and Wilmington ground vendors to build that stability. Choose fibers that chuckle at grape juice, planks that shrug off sea coast sand, and grout that treats tub time like a recreation. Pair them with native pros who take into account humidity, acclimation, and the paintings of a decent seam. Then permit the young people free. The appropriate flooring will forgive them, and you will like living with it even after the closing Lego will get retired.

Tide & Timber Flooring

Address: 5032 Randall Pkwy, Wilmington, NC 28403, United States

Phone: +19102005136

<https://tideandtimberflooring.com/flooring-store-wilmington-nc/>

<https://www.facebook.com/tideandtimberflooring/>

<https://www.instagram.com/tideandtimberflooring/>

<https://www.linkedin.com/company/tide-timber-flooring/>

<https://www.pinterest.com/tideandtimberflooring/>

<https://x.com/tidetimberfloor/>

<https://www.tiktok.com/@tideandtimberflooring>

<https://www.youtube.com/channel/UCrN98Hi6uafB3z0hl2YNSgQ>

<https://www.houzz.com/pro/tideandtimberflooring>

<https://soundcloud.com/tide-and-timber-flooring>

<https://www.provenexpert.com/tide-timber-flooring>

<https://us.enrollbusiness.com/BusinessProfile/7783111/Tide-Timber-Flooring-Wilmington-NC-28403>

<https://www.n49.com/biz/7164488/tide-timber-flooring-nc-wilmington-5032-randall-pkwy/>

<https://www.a-zbusinessfinder.com/business-directory/Tide-Timber-Flooring-Wilmington-North-Carolina-USA/34408787/>

https://akama.com/company/Tide_&_Timber_Flooring_ac3923956972.html

<https://www.iformative.com/product/tide-amp-timber-flooring-p3014899.html>

<https://north-carolina.bizhwy.com/tide-timber-flooring-id26402.php>

<https://www.dealerbaba.com/suppliers/others/tide-timber-flooring.html>

<http://tide-timber-flooring.locable.com/profile/>

<https://supplyautonomy.com/tidetimberflooring.us>

<https://trueen.com/business/listing/tide-timber-flooring/736648>

<https://www.zipleaf.us/Companies/Tide-Timber-Flooring>

https://freebusinessdirectory.com//search_res_show.php?co=670064

<https://www.whatsyourhours.com/usa/wilmington/tide-timber-flooring>

<https://www.bizmakersamerica.org/usa/wilmington/other/tide-timber-flooring>

