

Remodeling a house in Phoenix brings its personal restraints and also conveniences. The climate runs warm and also dry for a lot of the year, gale season hits with sudden hurricanes, as well as dust rides in on desert winds. Materials that grow in the Pacific Northwest may break, vanish, or even warp here. I have checked out an impeccable Carrara vanity engrave within weeks given that a house owner utilized an universal glass cleaner with white vinegar, as well as I have viewed a porcelain kitchen contrarily shake off years of margarita evenings whole. Selecting properly is component product know-how and component local judgment. This guide distills the trade-offs I go through along with clients of Phoenix Home Remodeling, from kitchen counters to bathroom tile and also the completing particulars that determine whether the space really feels customized or compromised.

What weather and lifestyle demand coming from surfaces in Phoenix

The sunshine is unrelenting. South and also west visibilities prepare surfaces through home windows, even with low-E glass. UV is going to yellow some resins, discolor particular dyes, and also accelerate sealer break down. The sky is dry out the majority of the year, after that humid in bursts, which worries dimensionally unstable materials like solid hardwood. Evaporative coolers, if you still work one, add [general contractor near me](#) an additional variable. You likewise contend with tracked-in grit that acts like sand paper, specifically on floors.

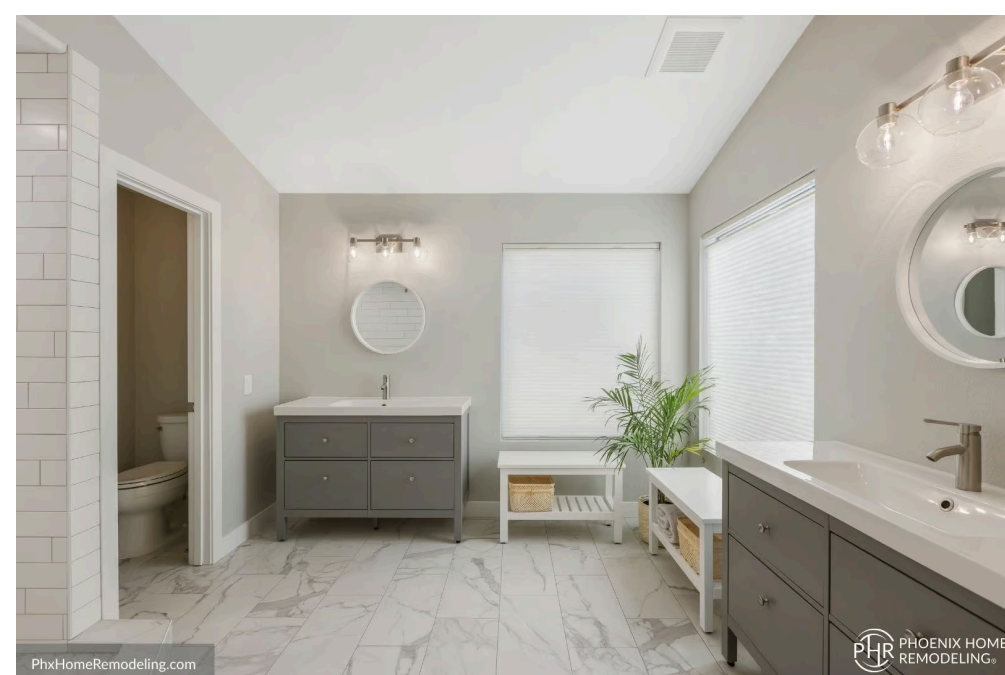
Daily routines matter as much as temperature. Families who establish scorching slab skillets on a counter top need accurate warmth endurance, certainly not industrying insurance claims. If you prep with limes and tomatoes, acidity becomes a decision-driver. If you hardly seal off anything and prefer low routine maintenance, that tightens selections swiftly. A really good general specialist factors these truths when helping kitchen remodeling and bathroom remodeling decisions.

Countertops: what stands up as well as why

Countertops take heat, effect, chafe, and discolorations. In Phoenix kitchen spaces as well as showers, the best comprehensive artists are actually crafted porcelain pieces, sintered rock, and mid-to-high-density quartz. All-natural stone continues to be worthwhile, but you need to have to allow upkeep and specified regulation in creating along with your remodeling contractor.

Quartz: the useful default along with a handful of caveats

Engineered quarta movement fads around 90 to 93 percent ground quarta movement with resin binders as well as pigments. It withstands discoloring far much better than marble as well as very most granites, and the surface is impermeable. Cleaning is actually easy: moderate cleansing soap, water, microfiber fabric. The drawback in Phoenix is actually heat. Prepare a 400-degree Dutch oven directly on quartz and you can easily burn or even tarnish the resin. I have changed parts where a home prepare maintained a toaster under a top cabinetry and forgot a trivet.



UV exposure is actually the other worry. If your isle partakes a sun-drenched area, certain shades may change in tone over years. Darker sound tones move extra significantly than polychromatic or even veined styles. If your kitchen remodeling plan includes big home windows, request UV-resistant lines as well as program key protecting with movie or internal therapies in the style phase.

Porcelain as well as sintered rock: low upkeep, high durability

Large-format porcelain and sintered pieces have acquired grip since they take care of the Phoenix setting properly. They are basically nonporous, shake off citrus and also white wine, as well as withstand warmth far better than quartz. I viewed a ceramic island take a cast-iron pot right from the stove without a mark. The patterns and appearances have actually boosted substantially in the final 5 years, along with matte ends that conceal spots and also high-def veining that checks out well all-natural from a couple of feet away.

Installation is actually much more concentrated. The pieces are actually light yet weak, as well as outlines chip if a staff cuts without the ideal cutters or even hurries a miter. You prefer a remodeling specialist with slab-specific instruction and a maker who can easily show you completed joints face to face. Expect a modest costs over mid-tier quarta movement yet lower maintenance than natural marble or limestone.

Granite: still relevant, if you decide on wisely

Granite varies commonly in density as well as porosity. A tight-grained black or even steel-gray granite, effectively sealed off, tolerates warm and also heavy usage. Lighter, much more exotic rocks usually need recurring closing and still present oil staining around cooktops. In one Phoenix home, a salt-and-pepper marble isle mounted in 1999 appeared virtually brand-new after 20 years due to the fact that the individuals cleaned spills without delay and also resealed yearly. A dull, remarkable vein-cut stone in a neighboring house discolored in the 1st month and needed to have poultice treatments.

Honed finishes appear sophisticated however reveal oil dimming until sealed completely. Leathered surfaces conceal finger prints and inscribing far better than sleek, a useful option for busy kitchen areas. Ask your standard contractor for an example of the precise slab to examine with lemon extract, merlot, and hot water. Five mins of screening saves weeks of frustration.

Marble and limestone: stunning, but set your expectations

For bathroom remodeling, marble still gains on romance. It likewise inscribes when you leave toothpaste, facial acids, or even tough water beads. In a powder bathtub used mostly by grownups, it may be kept. In a children' shower, it becomes a chemical make up lab. Sealers slow staining, not inscribing. In kitchen spaces, marble is actually a serious commitment. If a customer understands aging as well as accepts occasional refinishing, I am going to join. If they expect the area to remain flawless, I steer them to ceramic that resembles marble.

Butcher block: hot touch, genuine maintenance

Butcher block provides comfort that rock may certainly not. In Phoenix, the dryness can open up junctions if the timber is actually not accommodated as well as fueled oil consistently. Maple, walnut, or even oak operates as an emphasis island or baking terminal. I hardly ever install it around sinks right here, where sprinkles and tough water trigger blackened joints as well as increased surface. If you desire it near water, opt for an oiled finish you are going to restore monthly as well as wrap your undermount sink intermediary with a waterproof membrane layer prior to install.

Concrete as well as specialized surfaces

Concrete provides modern character but demands closing and reveals hairline splitting with temperature level swings. Some customers adore the activity and also patina. Others phone it a problem. If you choose it, select a maker experienced in desert weather, point out thread encouragement, and plan an annual reseal. Solid-surface polymers have actually befallen of support for main counters, but as incorporated laundry or even utility leadings they stay reasonable with the help of easy repairability.

Edges, fullness, and profile page particulars that matter

Thicker sides feel sizable yet may appear massive in portable kitchens. A mitered side obtains a 2-inch front end from a 12-millimeter slab safely if the maker nails the seam. Straightforward profile pages like soothed or half-bevel outperform elegant ogees, which potato chip and also collect gunk. For quartz and also porcelain, I prefer a 3/8-inch to 1/2-inch span on sinks to protect against takes coming from pots.

Waterfall finishes job well in Phoenix present-day homes, particularly with ceramic where pattern connection may be bookmatched. Always remember that waterfall panels concentrate sun exposure if near a moving door. Decide on a UV-stable product and define an expansion space at the floor to prevent seasonal stress.

Tile choice: floorings, walls, as well as downpours that endure the desert

Tile layout selections usually dismiss the realities of tough water, tracked grit, as well as quick temp modifications. Those that prepare for these variables appreciate their areas for a long times; those that do certainly not wind up scouring grout or scheduling a redo.

Floor tile: slip, grit, as well as grout

On floorings, porcelain possesses the type. It avoids scratch coming from sand and also stands up to chair lower legs. Seek PEI rankings as well as DCOF slip rankings. In energetic homes, a matte or even lightly textured finish conceals dust between cleanings. High-gloss huge floor tiles can easily switch a corridor into a skating rink if monsoon rain strikes the access, and also they show every footprint.

Rectified porcelain can run with tight cement junctions, however stay away from the lure to define 1/16-inch across a wavy slab. In much older Phoenix creates, pieces usually have unevenness. A 1/8-inch grout shared provides your floor tile setter area to repair for flatness and always keeps lippage down. Large-format floor tiles like 24 through [remodeling contractor](#) 48 ins flex a room, yet they magnify any sort of installment mistakes. A respectable remodeling specialist will check piece monotony as well as recommend self-leveling material where needed.



Grout has improved. High-performance cementitious cements and single-component urethane or even acrylic cements avoid tarnishing far better than the outdated sanded options. I indicate them in cooking areas as well as principal bathrooms, after that close every number of years. Correct epoxy grout avoids everything but is unforgiving to mount; it belongs along with a staff that has actually performed it many times in our heat.

Shower floor tile: dealing with difficult water as well as heat

Hard water down payments engrave glass as well as leave behind nutrient fog on darker floor tiles. Smooth porcelain or polished ceramic on wall surfaces creates cleansing simpler than rough rock. Matte appearances conceal water detecting far better than deep-seated polish. For floorings, a mosaic with adequate grout lines adds footing, and it contours to the pitch. I typically keep shower flooring ceramic tiles under 2 by 2 inches for comfy pitch as well as grip.

If you love natural rock, limit it to include wall surfaces away from the main spray or select thick rocks like lava or even developed marble in little dosages. A customer that emphasized upset travertine in a primary shower requested a substitute within

three years due to countering and discoloration. When rock is actually non-negotiable, I push squeegees, a water conditioner, and attentive sealing as a bundle deal.

Tile layout and transitions

Set your layout around sightlines. Align cement joints with window middles, narcissism sides, as well as entrances. In kitchens, I prefer full floor tiles at the absolute most obvious wall surfaces and also reduce pieces put under bottom cabinets. Backslashes take advantage of dry-laying the 1st several rows to balance cuts at both ends.

For shifts to LVP or wood-look floor tile, Schluter-style accounts offer a clean metal edge in cleaned nickel, stainless, or black. They align along with the modern visual popular in Phoenix brand-new constructions. If you yearn for a classic look, a bullnose interrupt matching floor tile works, however supply accessibility could be confined. Strategy early to stay clear of combining areas from various color lots.

Backsplash considerations in Phoenix kitchens

Backsplashes partake the splash zone for oil, citrus, and also vapor. Glass floor tile looks crisp but reveals touches and also water locations. A satin ceramic or ceramic with a refined appearance hides even more as well as cleans conveniently. If you long for formed cement ceramic tiles, use all of them behind a bar or breakfast nook rather than the cooktop, unless you are committed to precise sealing and also gentle cleaners.



25 years of the free encyclopedia

Gilbert, Arizona

Gilbert, Arizona

Town



Full-height slab backsplashes match counters and decrease grout servicing. Along with quartz, look for UV exposure. Along with ceramic, seams at corners are the graphic obstacle. An experienced maker can bookmatch veining for a near-continuous wrap around a home window or even hood.

Finishes as well as components: the information that produce a space livable

Hardware, pipes, as well as lights finishes put the shade and control upkeep. In Phoenix, fingerprints and tough water smudge specific finishes even more quickly.

Satin or even brushed nickel, stainless, and also some combed golds delay effectively and also conceal locating. Flat dark appeals sharp but exposes mineral spots unless rubbed usually. Oil-rubbed bronze differs through supplier; some are actually living appearances that intentionally use, which is either pleasant or even maddening.

In washrooms, indicate pressure-balance or thermostatic valves from brand names along with powerful local area components accessibility. A high-flow rain scalp sounds fantastic till you realize your heater beings in a garage at 120 levels in July as well as has a hard time to keep up in winter early mornings. If you are actually redesigning the primary bathroom, ask your remodeling contractor to run a specialized line as well as take into consideration a recirculating pump to reduce delay time.

Door equipment ought to line up with your closet hardware hue, certainly not always match it. Mixing coatings operates if you work with traces, warm along with cozy, refreshing with cool. For toughness, sound metallic beats unfilled items that break up and rattle over time.

What servicing actually resembles, month through month

Maintenance is the silent price of a choice. I consistently set out a schedule for clients.

- Quartz counters: wipe regular along with pH-neutral cleaner, stay away from abrasive pads, make use of trivets for warm pots. No closing needed. If you adore to bake straight on the counter, a pastry slab insert crafted from marble or even ceramic safeguards the quarta movement as well as scrapes less.
- Porcelain or even sintered counters: identical to quartz yet even more warm tolerant. Skip wax-based gloss that leave behind a movie. Evaluate edges month to month for potato chips if you cook with massive cast iron.
- Natural rock: reseal every 6 to 18 months depending upon rock as well as usage. Exam through sprinkling water; if it darkens promptly, it requires sealing. Maintain a stone-safe cleanser handy. For etches, an expert can re-hone and buff, yet that is actually disruptive.
- Tile as well as grout: squeegee downpour wall surfaces after make use of, regular wipe-down along with a moderate alkaline cleaner, as well as reseal cementitious cement annual in high-use zones. If you put up epoxy, only well-maintained; sealing off is actually unnecessary.
- Finishes: always keep a microfiber towel under the vanity for fast wipe-downs after combing pearly whites. A water conditioner reduces locating all, from installations to glass.

Budgeting smartly for longevity as well as design impact

Where to devote and also where to conserve depends on how you make use of the spaces. In kitchen areas, I focus on resilient counters and high-grade plumbing system shutoffs over elaborate door types. Compartment containers along with soft-close components concern each day. A mid-tier quarta movement with a well-executed falls commonly looks a lot more costly than a high-end rock along with mediocre side work.

In shower rooms, invest in water-proofing, particularly the downpour pot and particular niches. A solid membrane layer system underneath the floor tile protects against the kind of sluggish leaks that appear as wall swelling six months eventually. Decide on tile that you may preserve easily, then splurge on one emphasis area, like a veined porcelain piece on the narcissism wall structure with backlit mirrors.

Clients usually undervalue manufacture and also work. Two kitchen spaces along with the same product price may create various totals depending upon seam count, intermediaries, miters, and also edge profile complication. Inquire your standard specialist to burst out jive collection items. If you need to have to firm up prices, decreasing miters and going with a typical fullness can save thousands without telegraphing "budget plan" to the eye.

Working along with your remodeling professional: a Phoenix cadence

Lead opportunities and also strategies in our market rise and fall with demand as well as supply chain missteps. Porcelain pieces and also specialty components can get 6 to 10 full weeks. Plan final component selections prior to trial therefore your venture performs certainly not slow. For July and August installs, staffs start early to beat the heat energy. Adhesives as well as sealants specify faster, which helps some activities and also makes complex others. Your contractor will definitely consider setting up accordingly.

Ask to see and also approve color lots for ceramic tile as well as slabs. Desert lighting is actually distinct: hot, powerful, as well as often complexioned by dirt in the air. Colours that check out cool in a display room can skew warmer in the home at dusk. We deliver example boards to your house, relocate all of them about at various times of time, and also make use of a flashlight to simulate undercabinet lighting. Little actions prevent surprises.

If you intend solar energy or even window upgrades, latch those decisions before ending up work. New glazing has an effect on UV exposure as well as warm gain around counters and backsplashes. Exterior sheltering, like pergolas or even deep-seated overhangs, creates a marked variation in exactly how exterior kitchens as well as adjacent insides age.



Phoenix Home Remodeling's Podcast

Podcast to help homeowners avoid the common contractor nightmares.

Remodeling has the 2nd most consumer complaints in the US, only beaten by used car dealerships.

Considering people buy, sell, or lease a vehicle 5x

Case keep in minds coming from latest Phoenix projects

A north Scottsdale kitchen along with a wall structure of western side glass needed to have a counter that would certainly not yellow. Our experts selected a matte porcelain piece along with a silent marble appeal, mitered to a 2-inch side on the island and also wrapped as a water fall cheek by jowl. The cooktop remained on a different operate where a heavy stainless trivet right now resides permanently. A full-height ceramic backsplash dealt with cement responsible for the variation. Two summer seasons in, there is no different colors change, as well as cleansing is a simple wipe.

In a midtown home, the individuals wanted authentic zellige floor tile for the backsplash as well as a cozy counter. We used a leathered black stone along with obvious motion. The zellige's variation demanded a client setter, and also our team accepted a broader grout junction to lessen breaking. The granite hides fingerprints as well as join unlacquered metal hardware that will definitely patina. That was actually a mindful choice to accept improvement over time.

A Chandler main bathroom along with hard well water opted for large-format ceramic on the wall surfaces as well as a little hex porcelain on the floor for footing. Fixtures are stroked nickel, chosen for low detecting. Our company pointed out a water softener in the course of the plumbing system rough-in. That solitary decision will definitely conserve the glass as well as fittings years of wear.

When to decide on durability over passion, as well as when to bend the rules

If you cook daily with citrus, sauté typically, and amuse big teams, porcelain or a heavy stone will certainly save you panic. If you hardly prepared hot frying pans down and also adore the technique marble considers dawn, allow etching as aging and employ a producer that may refinish on site later on. In children' showers and also rentals, toughness beats whatever: porcelain ceramic tile, quarta movement or ceramic counters, and single-component grout.

Rules bend over when clients will definitely maintain areas and also choose genuine products. One couple demanded refined marble for a baking isle. Our company sealed it along with a permeating sealant, laid out cutting panels, as well as instructed them just how to manage etches along with powdered gloss for little spots. They adore the lived-in figure and also deliver photos of the isle cleaned in flour. Not every Phoenix family reveals that sensitivity, which is actually fine. Good style lines up with practices, environment, as well as budget.

A concise collection guidelines for Phoenix projects

- Confirm sunlight exposure in the space as well as select UV-stable surfaces for those zones.
- Choose heat-tolerant counters if you put scorching cooking equipment down regularly.
- Favor ceramic tile and high-performance cement in damp or high-traffic areas.
- Match appearances to upkeep tolerance, brushed over perfected if minimizing spots.
- Schedule varieties early as well as authorize actual color lots under your home's lighting.

Bringing it together

Materials are actually not merely fashion, they are resources. In Phoenix home remodeling, they operate under harsher lighting and drier air than numerous spots. The most safe bets, in my knowledge, are actually ceramic or even sintered pieces for multitasking home kitchens, quartz movement for low-maintenance baths and also utility room, dense granites where you wish genuine stone, as well as ceramic tile just about anywhere. Coating in appearances that perform certainly not reprimand you for residing, combed over perfected when in doubt, and components along with heft that really feels really good in the hand.

Work along with a remodeling professional who shows mockups, tracks lead times, as well as can reveal why a certain cement or edge account matches your planning. Ask for examples, attempt to discolor them, set a warm pot down, and also leave them in the sunlight for a time. The choices you create along with a little bit of screening currently is going to pay back in surfaces that grow older beautifully by means of summer seasons that flex long as well as bright. In a temperature that challenges every finish, that is how you obtain a kitchen or shower that still looks new when the gales roll in again.