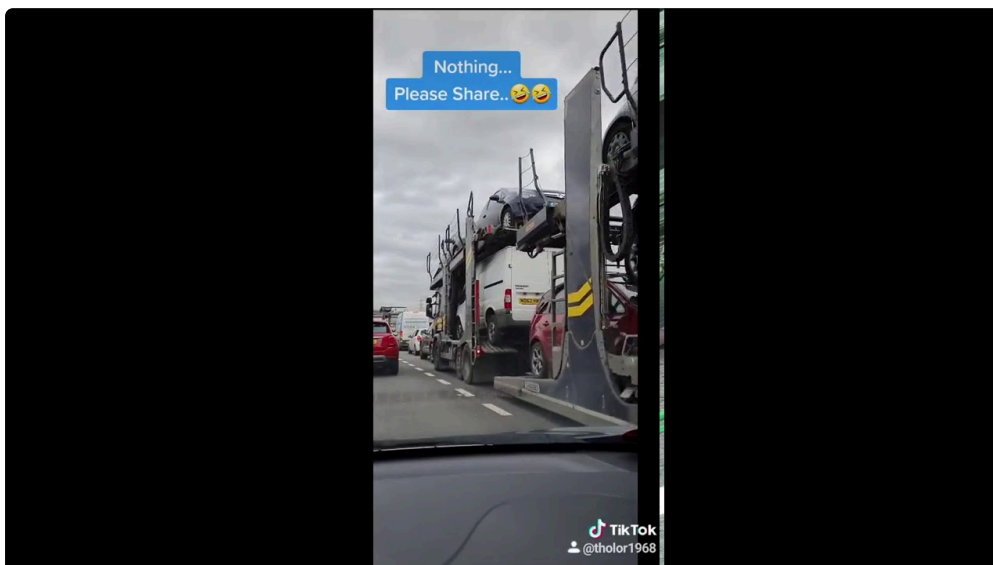


Every Irreversible Adjustment of Station seems like a race that begins the min orders go down. The countdown is actual, even if the dates float for some time. There is equipment to inventory, clinical and institution records to gather, real estate to exit and enter. Because swirl, moving a lorry sits in a strange middle ground. It is necessary, it is costly, and it frequently operates on an entirely different timeline from your household items. I have actually managed relocations where the vehicle showed up two weeks very early and another where a port hold-up pushed distribution into the 4th week after we landed. Both steps exercised, but for various factors: one owed to disciplined preparation, the other to an adaptable backup plan.

What follows is a field guide formed by duplicated PCS cycles, a couple of difficult lessons, and conversations with carriers at filling anchors, base transportation offices, and port backyards. It mixes policy context with useful actions so you can align the best auto carrier, prep the car correctly, and time it to your orders with less surprises.

## Know the guidelines that really regulate your move

Before you value a carrier or select days, validate what your orders and solution policies cover. A privately had lorry can be shipped at government expense for lots of abroad projects. For a lot of continental steps, the federal government does not pay to move your automobile unless you qualify under details scenarios, such as certain clinical or difficulty exceptions. Families generally drive one POV and ship the various other at their own expense, fold up the auto into a Directly Bought Move, or offer a car and purchase the brand-new responsibility terminal. The ideal selection depends upon distance, timeline, and the problem of the vehicle.



When you are OCONUS, enjoy the small print. Some commands permit shipment of one POV at government cost per active duty member. Others restrict the dimension, weight, or modifications. A lifted truck that ran penalty in Texas could not clear port policies in Germany. In Japan and South Korea, discharges and lights requirements can need tiny modifications. Timelines are various too. Transoceanic lorry transport generally runs 30 to 60 days port to port. If you are island bound, depend on the long end of that range and pad for weather.

For CONUS transfers, the business economics drive the decision. If you require to be at the new obligation terminal in three days and your partner is taking care of kids and family pets, shipping a second automobile can be a peace of mind saver. Anticipate residential auto transport to cost anywhere from 50 cents to 1.25 bucks per mile alike lanes, with greater prices in wintertime or for remote pick-up and shipment. A compact sedan from Virginia to Texas in springtime can land in the 900 to 1,200 buck range. A hefty SUV during a January cold snap can break 1,800 dollars for the exact same lane.

# The PCS timeline, and where the automobile fits

The rhythm of a PCS hardly ever matches the rhythm of a provider course. House items tons on the first day, you clear housing on day 2, and you begin the drive day three. Car providers desire a versatile pickup home window of 2 to 5 days and frequently call with a half day of notification to confirm. If you try to compel a medical pickup at 10 a.m. Tuesday the 5th, you will certainly pay a costs or watch the dispatch slip.

Work backwards from your record day. If you are driving one POV, map the path and inspect institution or pet dog needs that may reduce you down. If you are shipping a car, give on your own a three to seven day pick-up window that ends prior to your last day in housing. You do not want to hand the tricks to a motorist on the curb while getting rid of final inspection. If that is unavoidable, prearrange base access and a handoff place. I have actually used the site visitor facility parking area outside eviction and a coworker's driveway. Both needed extra call and a signed restricted power of lawyer so a pal could launch the automobile. It was worth the hassle.

Delivery windows differ too. For cross country hauls, 7 to 10 days prevails. I budget twelve, then I enjoy if it appears in eight. City couple with hefty carrier traffic, like Southern California to the Dallas hallway, relocate quicker. Thin routes right into the Hill West can run slower, particularly if your home rests far off the interstate.

## Choosing a cars and truck carrier with eyes open

Two components of the industry matter to you: providers that have vehicles and brokers that match products to carriers. Most house relocations touch a broker also if you never ever see words on an agreement, due to the fact that brokers build the nationwide service provider network and fill trucks. That is not a problem by itself. It ends up being a trouble when a broker can not or will certainly not veterinarian the vehicle they designate, or when a dispatcher vanishes the minute an insurance claim appears.

Here is a simple method to evaluate a partner without transforming it right into a research study project:

- Verify the DOT and MC numbers and search for security and insurance coverage data on the FMCSA website.
- Ask who holds the freight insurance and the limitation. One hundred thousand dollars per tons prevails. Higher is better if you own a new SUV or a high value vehicle.
- Request a created pick-up home window and a shipment quote that accounts for weekend breaks and ports if applicable.
- Read current evaluations for "communication" and "cases dealing with," not simply price.
- Confirm whether the business is a broker, a service provider, or both, and obtain the name of the real vehicle firm appointed when dispatched.

Open transportation works well for a lot of typical automobiles. It is budget-friendly and extensively available. Enclosed transportation costs a lot more, usually 30 to 60 percent a lot more, and it makes good sense for classics, exotic cars, and freshly recovered vehicles that need added security. Terminal to incurable delivery decreases cost but includes days and an added handoff. Door to door is easier for families juggling children and base checkouts, but it can still indicate meeting at a wide road near your home if your neighborhood has limited turns, reduced trees, or HOA restrictions.

## Paperwork that safeguards you

You indication 2 files that issue more than any type of sales brochure. The very first is the Bill of Lading, which is the contract of carriage. The 2nd is the problem report, sometimes folded right into the Bill of Lading. Treat the problem report like a vehicle examination at a rental counter, other than it shields your vehicle, not theirs. Stroll

the vehicle with the motorist, mark every scrape, and picture the panels and wheels in great lights. Tag the odometer and any warning lights on the dash. Keep in mind aftermarket products like roof racks or looters. On shipment, repeat the walkdown. If you see damages that was not provided at pickup, create it on the type prior to you sign and take clear photos. After that notify the dispatcher right away. Tidy documents relocations asserts ahead. Vague stories go nowhere.

Insurance language can really feel unsafe. Ask straight concerns. Who pays if a band scuffs the paint? Is roadway particles covered while the cars and truck adventures on an open service provider? What happens if the roofing system antenna breaks? Several policies exclude acts of God and road debris. Insurance coverage can be second to your personal vehicle policy. If you possess an expensive automobile, call your insurer in advance and ask how your comprehensive and collision protection uses throughout transportation. You might decide to bring a reduced deductible for the month of the move.

## **Preparing the car so pickup is smooth**

A vehicle that is ready to lots gets on the initial readily available truck. A cars and truck that surprises the motorist with a drained battery or 4 loose relocating boxes in the trunk sits till somebody sorts it out. Do the easy work so you are not the reason a truck misses its route.

- Wash the exterior, eliminate individual things, and shoot dated pictures. Clean vehicles make damage less complicated to find and record. A light laundry is enough.
- Service what issues for packing. Examine tire stress, battery health and wellness, and liquid leaks. If it begins and guides, it typically ships. Extreme leakages that trickle onto lower deck vehicles can get you rejected at the curb.
- Set the fuel to concerning a quarter storage tank. Less fuel is more secure and usually needed. Do not ship gas containers or flammables.
- Disable alarm systems and toll tags, and maintain one full set of tricks handy. If your cars and truck has a hidden kill switch, inform the driver.
- Remove or safe and secure loose devices. Antennas, ski shelves, detachable looters, and aftermarket haze lights typically suffer en route if left on.

If your vehicle is inoperable, tell the dispatcher in advance. Winching a non-runner onto a trailer is practical, but it alters the kind of vehicle that can approve the work, and it commonly includes a few hundred dollars. If your parking place sits in a limited garage or a dead-end dead end, hunt a vast pick-up point close by and inform the driver. Service providers need long, straight strategies and area to turn.

## **Coordinating with base accessibility and housing**

Drivers need clear guidelines for base entry. Some setups permit commercial vehicles with primary gateways with a basic credential check. Others need advance documents or limit hours. Call the site visitor control center a week ahead to verify. If the base rejects accessibility to huge gears, set up a conference point outside the gate. Pick a great deal with area and daylight. I have utilized resort car park on the accessibility roadway and the Exchange whole lot by special consent. Ask the manager, after that leave the area cleaner than you located it.

Off base, check HOA policies. Lots of neighborhoods limit large vehicles after <https://autorescuetransporter.com/services/car-transport-walnut-creek-bay-area-ca/> certain hours. If your road has numerous parked cars and trucks or reduced branches, guide the chauffeur to a broader cross road. On

distribution, your new base may have a different collection of guidelines. Obtain wise on them before the truck is en route.

## **The cash side: repayments, taxes, and timing**

If you are OCONUS and the federal government spends for one POV, work through the official vehicle processing facility. Maintain copies of orders, drop-off invoices, and delivery papers. Reimbursement timelines vary by command. If you pay of pocket for a CONUS shipment, track the invoice and evidence of settlement. Under particular conditions, sections of a personally acquired move can offset traveling costs. A financing workplace can inform you what applies that year.

Rates swing with season and lane need. Month end usually runs rich because service providers attempt to shut profits cycles. Early spring has a tendency to cost less than late summer season. If your days line up with a heavy house goods rise, plan for greater bids. Also check how a provider deals with termination or delay. You want a policy that enables a single free reschedule if your report date slides, which takes place regularly than anybody admits.

Some states tax brokered transport differently than carrier-direct transport. If the quote seems strangely low or high contrasted to others in the exact same lane, ask for an all-in number that includes any surcharges, terminal charges, or port handling if applicable. Transparent companies do not hide the ball.

## **The friction factors you can actually avoid**

Every relocation generates rubbing. Some you can not stop, like a wintertime storm shutting down a mountain pass. Others are preventable.

The most usual avoidable pain point is the dead phone. If your driver can not reach you, they relocate to the following pick-up. Text updates aid, but not every vehicle driver utilizes the very same application. Share 2 phone numbers and ask the dispatcher for the driver's number as soon as assigned. Save it.

The second is overpromising a driveway handoff. If your road can not take a 75-foot gear, satisfy at a broader area. The vehicle driver is just as encouraged as you are to complete the course, however they need to comply with safety and security and local rules.

The third is shipping contraband. No firearms, no ammo, no pressed gases, no home cleansing fluids, no food in the trunk, and no family pet carriers packed with products. Besides security, the legislation deals with an automobile carrier as an electric motor provider, not a relocating van. Providers are within civil liberties to refuse a lots if they see restricted items.

## **Overseas and port realities**

Port timetables run on their own clock. Roll-on, roll-off vessels fill cars swiftly, however they hold countless units, and departure slots can move. When your orders include a port, presume a few unchecked days at both ends. Your car might being in a safe yard for a week before it boards, and after that a week after it lands while it removes. You can affect the front end by delivering to the port early in the ship home window and showing up with a tidy, dry automobile. Some ports decline cars with unclean undercarriages to avoid transfer of invasive species. If the port requires a heavy steam clean, it adds time and a tiny fee.

On the backside, variable local guidelines. European Union ports often need evidence of possession, ticket, and orders, all matching exactly. A missing out on middle preliminary has actually postponed greater than one pickup.

In island destinations, room restraints can require pick-up at a remote great deal. Call the vehicle processing facility, not simply the carrier, a week before arrival to confirm.

## **Shipping motorcycles, classics, and EVs**

Special lorries relocate with the same fundamentals, yet details matter.

Motorcycles ride in dog crates or on specialized pallets with soft straps, wheel chocks, and bars to shield controls. Inform the shipper the exact version and any kind of adjustments. Side cases and windshields require cushioning or elimination. Gas ought to be low, and the battery easily accessible if it needs disconnecting during ocean transit.

Classic automobiles and reveal lorries take advantage of enclosed carriers and greater insurance limitations. Low ground clearance requires liftgate solution. Step the clearance and share it. I have seen a driver build a ramp expansion from lumber to pack a museum-grade sports car. The added 200 bucks for the best gear felt inexpensive in that moment.

Electric vehicles ship fine on both open and enclosed carriers, however they include wrinkles. Many service providers request a state of charge in between 20 and 30 percent to handle fire risk and weight. Provide the typical mobile charger in the trunk and validate the tow hook area in the owner's manual. A level battery on a trailer develops uncomfortable hours for everybody. Also reveal aftermarket wraps or ceramic finishes. Soft straps still abrade if put on freshly coated surfaces without protection.

## **Communication with kids, pets, and the rest of your life**

You are stagnating a vehicle in a vacuum cleaner. You are moving a household. Develop small buffers that take in the influence. If your only vehicle is on a provider and base lodging is two miles from the commissary, those very first days get long. An economical leasing for three days on the front end or Turo for a week at the location smooths the sides. Be sincere with an institution concerning most likely delivery days so a teen does not miss sporting activities trial runs since the family members auto is someplace in Nebraska. Get rid of child seats before transportation. Old Cheerios in the seat bottom will certainly not assist your insurance claim if the fabric scuffs.

Pets aspect as well. If you prepare to meet a vehicle driver at a parking lot in July, do not bring a pet dog that needs to sit for an hour in the sun while the vehicle driver browses web traffic. Ask a next-door neighbor to enjoy pets for the pickup window. It appears small, yet I have actually watched a pickup stop working because a stressed guard kept delving into the vehicle's filling course every single time the driver attempted to line up.

## **What a practical pick-up day looks like**

Expect a call the day in the past and a message when the motorist is an hour out. When the vehicle shows up, the vehicle driver will scout the street and either back into position or guide you to a better spot. The walkdown takes place next. This is when your photos issue. Stay tranquility and detailed. Indicate anything you want kept in mind. Good drivers appreciate a careful customer due to the fact that it safeguards both sides.

Once loaded, the driver straps the lorry at 4 edges, sets a car park gear and brake, and may add soft pads where straps touch. For AWD and particular transmissions, neutral towing and securement approaches vary. Share the owner's hand-operated guidelines if they are not apparent. If your auto has an air suspension, established transport mode if available.

Do not tip to purchase special therapy. Idea for expertise if you want, however understand that dispatch establishes most directing choices. A crisp container of water and a clear course out of the area aid greater than a

folded up bill.

## **When something goes wrong**

Delays occur. A tire blowout on the trailer takes half a day. An evaluate station can require a re-route. Weather closes an interstate. The chauffeur must call. If they do not, call send off. If that stops working, call the broker. Maintain notes, names, and times. When a cars and truck arrives with damage, document prior to you do anything else, create it on the condition record, and file the case within the specified window, frequently 24 to 72 hours. Reasonable companies address little scuffs with a neighborhood body store. Bigger problems move via insurance coverage. The tone you establish helps. Clear, accurate, and firm functions far better than temper. If you run into a service provider that shrugs at damages, create a formal complaint with the FMCSA along with your insurance claim. That document matters.

Edge instances test perseverance. I as soon as had a cars and truck stuck 3 days beyond of a river because a reduced bridge shut after floodings. The motorist used to fulfill at a various community 45 miles away. That was not appropriate with tiny children and no second cars and truck. We discovered a happy medium. The driver returned the following morning at 6 a.m., website traffic still light, and slid through a detour. Everyone made their next stop. Compromise, secured in safety and good sense, relocates stubborn issues forward.

## **Balancing price, speed, and certainty**

You can have 2 of the 3 in wealth, seldom all three. Lowest price and high certainty rarely fit, especially on short notification. Speed and certainty price money. If you have a little time, store three quotes from companies with clean security documents. If your days are taken care of by institution calendars or a hard report day, pay the far better service provider. A missed pick-up can interfere with an entire computer more than the extra 150 dollars you saved.

Avoid going after the outright rock-bottom bid in an on the internet market where carriers and brokers blog post lots. Those proposals commonly depend on a vehicle driver going to back-haul at a discount rate. Often you get lucky. Occasionally you find out that good luck is not a strategy. A reasonable midrange cost with a written home window and a called provider is the long-term worth play.

## **A brief word on DIY options**

Some family members rent out a trailer and tow one auto behind an SUV or relocating vehicle. It can work if you stay under gross vehicle weight restrictions, have the best hitch, and fit with long, slow braking ranges. It ends up being high-risk in the Mountain ranges or in wintertime conditions. If you have actually never ever lugged in the past, a PCS trip with youngsters is not the moment to find out on the fly. If you choose this route, stop at a range, check tongue weight, and method support in an empty whole lot before hitting the interstate.

## **Small habits that make a huge difference**

Your future self will thank you for a few simple practices. Keep a slim binder or a shared digital folder for computer documents. Move the Costs of Lading, port receipts, and photos in there. Tag the spare secret and conceal it where you will certainly not neglect it. Establish schedule tips for pick-up home windows and check-ins. Share vehicle driver contact information with your partner so both of you can react rapidly. If you are going across multiple time areas, state the time area each time you validate a consultation. I have actually missed a motorist by half an hour due to the fact that we claimed 2 o'clock without saying whose two o'clock.

When you speak with a business, listen for just how they talk about unpredictability. Any individual that promises an identify pick-up five states away is overlooking the variables that define this job. The very best companions mention ranges, explain why, and remain reachable when the globe shifts an hour to the left.

## **Final thought from the road**

A PCS asks you to thread a needle while running. Car transportation is simply one thread. Treat it with respect, not fear. Pick a reputable companion, prepare the cars and truck, and construct a little moat of buffer time around the pick-up and delivery. If you hit an overseas port, discover its traits. If you have a specific niche automobile, spend for the ideal tools. If the strategy flexes, flex with it without distributing your rights. You will drive off the provider, take a breath out, and the next chapter will certainly begin. The quieter that handoff really feels, the extra energy you will certainly have for the remainder of the move.

Done well, vehicle transportation does not really feel dramatic. It just seems like one more box examined amongst fifty, the engine passing on on the various other end, acquainted seats under your hands, and a brief drive towards a new home.