

Shipping an auto can seem like handing over a family member. There is a fair amount of trust fund entailed, and the information issue. I have actually aided work with actions for everyday motorists, museum items, and stripped-out track builds, and the pattern is the same each time: clear expectations, solid documentation, and an automobile that prepares to roll. If you establish those items in place before the truck turns up, lorry transport transforms from a frustration into a well-timed handoff.

Why the details determine your experience

Auto transportation is a solution that mixes logistics, regulation, and antique driving. Providers work within tight home windows, city street limitations, and variable climate. Drivers earn money per mile and by the place, so they optimize courses with callous effectiveness. Inconsistencies on a Costs of Lading, a vehicle that will not begin, or a gated subdivision without turn radius for a 75-foot gear can cascade right into missed out on shipments. If you manage the variables you manage, you provide the automobile carrier what they need to do their work cleanly, and you protect your time, your spending plan, and your car.

Tip 1: Start early and develop a realistic timeline

Lead time remedies many issues. For cross-country transport, two to three weeks of runway is a comfy minimum for common open providers. If you require enclosed service during optimal season, aim for four weeks. City couple with abundant need, like Los Angeles to Dallas or Miami to Atlanta, can relocate much faster. Sporadic lanes, such as rural Montana to coastal Maine, take longer because dispatchers wait for sufficient freight to make the route pay.

If your action connections to a home closing, lease turn-in, or a military record day, barrier at the very least 3 company days on either side. Climate and traffic add rubbing that no quantity of preparation can eliminate. I as soon as had a vehicle driver shed a day near Flagstaff when a late springtime squall closed I-40. Dispatch located an alternating, however the routine drifted by 24 hours and the receiver had to meet in a food store lot after work. Everybody was flexible, and it developed into a non-event, however the only reason it worked was the pillow we built in from the start.

Tip 2: Match the carrier type to the lorry and route

Open providers relocate the mass of automobiles in the USA. They are efficient and economical. If you are shipping an everyday motorist, a fleet vehicle, or anything that sees freeway miles and weather condition, an open multi-car hauler is generally all you need. Expect typical cross-country rates in the 90 cents to 1.25 dollars per mile range on common lanes, with greater rates in winter season and for remote pickups.

Enclosed solution costs extra, frequently 50 to 80 percent higher than open, yet guards the car from the components and uses gentler loading angles. Pick this when ground clearance is limited, paint is fresh, insides are light colored, or you merely do not want roadway grit near the lorry. Single-car enclosed providers are the most costly and the most controlled. Museum distributions, concours entries, and track cars and trucks with splitters or diffusers ride there.

Beyond open versus enclosed, ask about trailer arrangement. A soft connection with wheel straps is great for the majority of vehicles. Chassis tie-down factors are better for specialty develops. If you have a front lip, air suspension, or a lengthy overhang, a liftgate trailer saves bumpers. If your EV has a dead 12-volt battery, see to it

the provider can utilize skates or a winch without tripping the vehicle parking pawl. An excellent dispatcher wants to know these information up front, since they determine which vehicle obtains your job.

Tip 3: Vet the business, not just the quote

The auto transport market blends brokers and providers. A broker discovers a vehicle, manages paperwork, and manages interaction. A provider possesses the trucks and utilizes the motorists. Great brokers deserve their charge since they have relationships that can open capability and fix troubles. Great service providers deserve organizing because you know who will touch the vehicle. The danger is the low-ball quote without any follow-through.

Use this fast confirmation list prior to you hand over secrets or a deposit:

1. Federal credentials: Request the MC and USDOT numbers, then confirm energetic authority and insurance policy on the FMCSA Safer website.
2. Insurance information: Verify cargo insurance coverage restrictions in creating, and request a certificate of insurance coverage. Try to find at the very least 150,000 bucks per vehicle on open carriers and more for confined. Higher-value automobiles might call for a rider.
3. Claims actions: Ask the amount of damages cases they paid in the last twelve month and the common turnaround. You want straight solutions, not obscure reassurances.
4. Real send off contact: Obtain a dispatcher name and a straight phone. If all you have is a sales line, you do not have a plan.
5. References you can call: 2 recent customers on similar lanes or with comparable cars expose just how they manage hiccups.

A useful note on prices: if 3 quotes cluster around 1,200 bucks and one sits at 800, the outlier typically suggests a bait-and-switch. That broker might upload your work on a tons board at a reduced price wishing a motorist attacks. If nobody does, they come back asking for more money or delay the pickup. Your time expenses something. Spend for a price that really relocates the car.

Tip 4: Understand and supplement insurance policy sensibly

Carrier freight plans generally cover physical damage brought on by the provider while your lorry is in their treatment. They do not cover pre-existing damages, stone chips from the roadway in open transportation, or what they think about Disasters. Lots of policies bring deductibles, and some leave out specific modifications like aftermarket kits.

Know the number that matters: the proclaimed value of your lorry. If a carrier caps coverage at 150,000 bucks and your cars and truck deserves much more, request for a motorcyclist or check out third-party transit coverage. Specialized insurance firms use temporary policies for high-value or classic cars that travel enclosed. Retain evidence of value, especially for changed lorries where receipts and assessments back up the number. For traditional autos, your own thorough protection usually continues to be in force, yet some insurance providers expect you to make an insurance claim and afterwards subrogate versus the provider. That process can take weeks. A fast discussion with your representative prior to delivery prevents surprises later.

Photograph every little thing. Good pictures time-stamped at pickup and shipment clear up most tiny disputes. Catch each side in full light, then take close-ups of bumpers, roof, hood, and wheels. If you have a convertible, picture the top from multiple angles. If the vehicle has a detachable aero piece or splitter, record it independently.

When a vehicle driver sees you doing organized documentation, they take notification and typically reciprocate with careful notes on the Bill of Lading.

Tip 5: Prepare the car like it needs to relocate under its very own power

Transporters enjoy a lorry that starts, guides, and quits. It lots much faster and keeps the route on schedule. Spend an hour preparing the cars and truck, and you will certainly cut that time off the pick-up and address migraines before they start.

Here is a concise prep listing that vehicle drivers appreciate:

1. Fuel and batteries: Leave a quarter container of gas in an ICE car and a cost above 60 percent in an EV. Validate the 12-volt battery is healthy and balanced so the vehicle wakes up.
2. Mechanical basics: Inspect tire stress, round off washing machine fluid, and make sure no active leaks. If it drips, inform the motorist so they can prepare the deck position.
3. Alarms and devices: Disable alarms and toll transponders, remove aftermarket roof covering shelves, and layer in mirrors if they do not auto-fold.
4. Loose things: Remove personal possessions. A lot of carrier insurance policy leaves out materials. Trunks load tightly throughout transportation and things can scuff panels.
5. Ground clearance: Note air suspension settings, lift points, and how to engage transport modes. Tape a card with instructions on the dashboard if needed.

If your car is a non-runner, claim so early. There is a different operations for winching a lorry, and not all equipment is set up for it. Vehicle drivers may need a more open deck setting or a winch car to aid. Expect an added cost for unusable lorries. The added price gets time and the equipment to lots safely.

Tip 6: Treat the Costs of Lading as your agreement on the curb

The Expense of Lading is not busywork. It is the binding document of problem at pick-up and distribution, and it manages how claims willpower. Stroll the vehicle with the motorist at pick-up and have them keep in mind every visible nick and scuff you locate. Photograph the significant Expense of Lading. If you are not present, appoint an adult that will certainly take it seriously. At delivery, repeat the walk on degree ground in good light. If damages exists that is not on the pickup record, compose it on the delivery Bill of Lading prior to you authorize, and take images. Call the dispatcher while the driver exists. Courteous, details documentation presently is even more effective than upset e-mails 3 days later.

A quick example from a customer step: a Miata showed up with a thumb-sized rub mark on the back bumper cover. The delivery Expense of Lading noted it, photos matched, and the service provider offered a 275 buck repair credit within a week. If we had actually missed it throughout shipment, we would likely have eaten the cost.

Tip 7: Strategy pick-up and distribution locations with the vehicle in mind

A totally loaded automobile transporter can extend beyond 70 feet. Tight dead ends, low-hanging trees, weight-limited bridges, and midtown roads with limited loading make access difficult or harmful. Motorists are responsible for the security of their rig and the cars and trucks on it, and they will not wager on a questionable turn.

Offer functional options. Wide retail car park near highway leaves function well. So do business parks after hours. If you live near a stadium or a huge church lot, those usually suit fast load and discharge home windows with lots of swing area. On a recent step right into a Boston community with aggressive street vehicle parking, we arranged distribution at a shopping center lot 12 mins away. The receiver adhered to the vehicle to the great deal, the chauffeur lowered the deck, and the entire transfer took 20 minutes.

Coordinate daytime where possible. Vehicle drivers load and dump extra thoroughly when they can see. If you should meet after sunset, bring a flashlight and use phone electronic cameras attentively. Rain is workable, however you will want a towel and persistence. Snow storms and ice existing real hazards. Flex your window by a day or more if a weather condition system slides with your route.

Tip 8: Review prices signals and prevent usual traps

Vehicle transportation prices relocates with supply and demand. Seasonal circulations, gas costs, and local occasions press rates up or down. Snowbird period in the eastern passage can add 15 to 30 percent to rates. A rise in public auction volume can take in enclosed providers for days. Gas additional charges track diesel trends with a lag of a couple of weeks.

Spot a trap when you see it. A reduced down payment paired with a promise of pick-up tomorrow typically means a broker intends to publish your car on a lots board at a hardly appropriate rate, then call you back if no driver bites. At the same time, you prepare your day around a ghost truck. One more trap appears as a termination cost if you decline a chauffeur who appears late during the night or with an unacceptable trailer for your auto. Read the solution arrangement for these clauses. Reliable outfits spell out what takes place if they miss out on a pickup home window or can [local vehicle shipping Bay Area](#) not resource the appropriate equipment.

Budget realistically. On a 2,000 mile coast-to-coast open transport, a convenient rate bands in between 1,900 and 2,600 dollars the majority of the year, creeping greater in winter or for remote beginnings and destinations. Confined shore to shore frequently ranges from 3,200 to 4,500 dollars. Brief jumps under 400 miles tend to price higher per mile due to the fact that loading and unloading time dominates driving time. If you load time-sensitive freight right into your plan, include a costs. Money does not ensure rate, yet it gets focus from dispatch when they fight for deck space.

Tip 9: Straighten documents, keys, and 3rd parties before the vehicle arrives

Logistics damage when tiny parts go missing out on. Keys, titles, and gate codes hinder schedules far more typically than blown tires. If you purchased from a supplier or an auction, verify the release gets on documents which any holds are cleared. If a bank still has the title, coordinate with them so the provider can fill without waiting. For cross-border relocations, enlist a customs broker early, and triple check VINs on every document.

Package two complete collections of tricks with each other, and classify them with a contact number. Do not leave one in the handwear cover box and one with the seller. If the automobile has a wheel lock, tape the secret on the console where the motorist can see it. If you own an EV, consist of the charging wire unless the receiver has a the same unit set aside. Tiny actions like these allow a motorist to shuffle cars on deck without calling you mid-route, which keeps your shipment on schedule.

Tip 10: Communicate plainly and maintain a contingency in your pocket

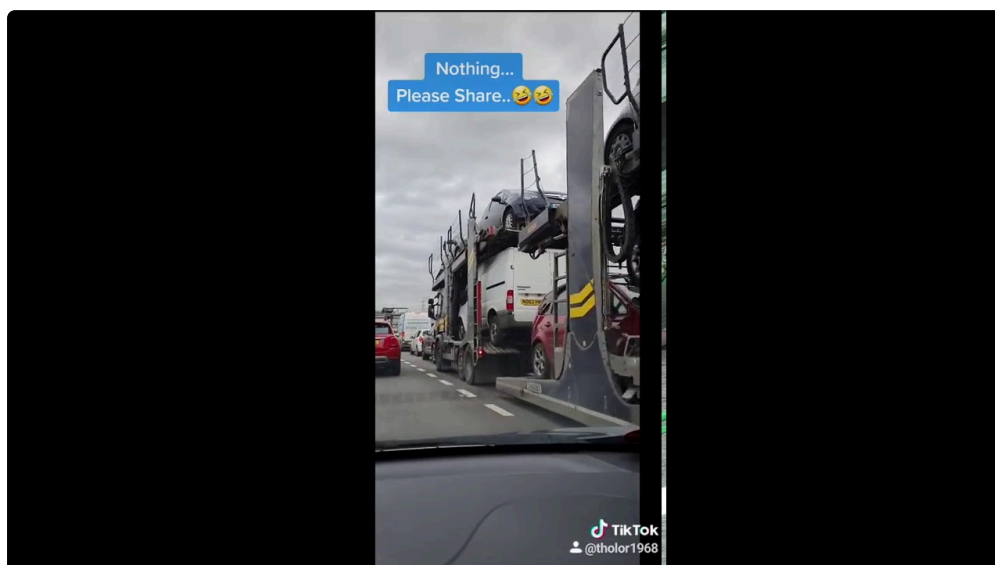
Dispatch grows on clearness. Validate home windows, precise pickup and delivery addresses, contact names, and at the very least two reachable telephone number. If you can not be offered, mark a local get in touch with who can choose. Share any kind of traits that might delay a lots: parking garage heights, gate hours, or a cars and truck with a particular push-to-start sequence.

Have a back-up plan if timing slides. Determine a close-by storage backyard or dealer that can hold the lorry for a day or two. Request their storage charges up front, often 25 to 75 bucks per day for outdoor storage space and more for confined. I have actually made use of a relied on tire shop near a customer's workplace as an alternative greater than when. The vehicle driver provided during business hours when the great deal was vacant, the store put the key in their risk-free, and the client picked up after work. Every person's day operated on time.

As for tracking, lots of service providers will certainly share the driver's phone once the vehicle is assigned. Text works much better than duplicated telephone calls. Request a rough ETA daily, and remain adaptable. If a vehicle driver offers a two-hour home window, prepare for plus or minus one hour. Friction fades when everybody anticipates a variety, not a bullseye.

Edge instances worth planning for

Every step has its outliers, and a little foresight conserves cash and paint.



- Low ground clearance: Cars with lips, splitters, or air suspensions need low-angle ramps or liftgates. Inform your dispatcher the exact clearance. A half inch issues. I have seen a 997 GT3 tons easily on a liftgate after two open service providers passed because their ramps were also steep.
- Modified cars and trucks: Extra-large tires, roof camping tents, or large fenders impact deck placement. The service provider might require an end place, which can set you back more. Action general height and size if your construct differ stock.
- Non-runners: A dead car changes the plan totally. Ask if the service provider can winch, and anticipate an inop cost. Make certain the guiding opens without power, or you may need a locksmith professional on standby.
- EVs: Beyond state of fee and 12-volt health and wellness, ask the chauffeur not to save the vehicle at 100 percent for days. If the cars and truck will certainly rest, ask for a 60 to 70 percent target. Supply instructions to place the car in transport or tow mode, and where to discover fee port releases in a power loss.
- Oversized vehicles and vans: Height and weight limitations differ by course. A raised 2500 with a roofing system rack may exceed several confined trailers, and open providers may need unique settings. Expect less tools options and longer lead times.

Each of these scenarios is workable when called out in advance. Springing them on a vehicle driver at the aesthetic pressures improvisation, which is when mistakes happen.

Broker or carrier: which fits your situation

There is no universal right solution here. If your route prevails and your days are versatile, a strong broker with a large carrier network typically wins on rate and cost. They can tap several companions and change promptly. If your automobile is specialized, high in worth, or sensitive to taking care of, a known provider with the precise equipment you require defeats a generalist. Numerous costs enclosed attire run their very own fleets, educate their drivers to a standard, and bring in clients that come back year after year.

The crossbreed that functions well in method: utilize a broker for market reach, however insist on accepting the designated carrier prior to pick-up. Ask for the service provider's name, MC number, and insurance certificate the minute they reserve the vehicle. If your broker resists, consider that a signal.

What a smooth day looks like

On a great day, the chauffeur calls the afternoon prior to with a window. You satisfy at a lot that fits the vehicle. The cars and truck is clean enough to inspect. Keys, wheel lock, and papers remain in a classified bag. You stroll the lorry together, settle on existing scuffs, sign the Bill of Lading, and take images. The motorist lots without drama, bands reveal through the wheels as expected, and the car adventures over any engines that might drip. En route, you get a message each day or 2 with a fast progression note. On shipment day, a final ETA lands an hour out. You satisfy, re-walk the automobile in daytime, sign, and drive off. Money removes as agreed. No surprises.

That scene relies on loads of small decisions you make well before the vehicle turns up. Many people just ship an auto a few times in their lives, so they do not constantly see the catches up until they trip one. Use these tips to run the play like a person who has actually done it a hundred times.

Bringing it all together

Auto transport is a fully grown sector run by hard-working people that keep to relocating schedules that the majority of us never ever see. Your duty is to offer a car that prepares, support the procedure with strong paperwork, and pick companions that get the phone. Do that, and the auto carrier becomes a predictable component of your step instead of the wild card that ravages your week.

Ship with lead time. Match equipment to your auto. Verify credentials and protection. Prepare the car so it rolls on and off without drama. Document with treatment. Think like a vehicle when you choose satisfying areas. Cost to relocate, not to hope. Straighten secrets and paperwork. Interact clearly, and keep a back-up. The remainder is highway miles and one tidy handoff at each end.