

Choosing the right community to call home or invest in within Palm Beach County, Florida, requires an informed comparison of local cities. Lake Clarke Shores and Lake Worth are two distinct areas offering unique lifestyles, amenities, and real estate opportunities. Whether you're a family searching for excellent schools, an investor eyeing waterfront properties, or a retiree seeking tranquility, this detailed comparison will help you decide which city best matches your needs and aspirations.

## Introduction to Lake Clarke Shores and Lake Worth

Located in the heart of Palm Beach County, Lake Clarke Shores is a quaint, primarily residential village known for its small-town ambiance and waterfront living. In contrast, Lake Worth is a larger, vibrant city boasting a diverse population, bustling cultural scene, and an array of urban amenities. Both communities lie within easy reach of Miami and West Palm Beach, making them attractive choices for commuters and those desiring access to South Florida's metropolitan centers.

Lake Clarke Shores appeals to those seeking a peaceful suburban environment surrounded by nature and lakes, while Lake Worth offers a more dynamic urban feel with historic neighborhoods and an active downtown area filled with shops, galleries, and entertainment venues. Understanding their geographical positions and community characteristics is key to comparing these two popular Palm Beach County locations.

## Residential Neighborhoods and Housing Market

The housing markets in Lake Clarke Shores and Lake Worth present contrasting options catering to different tastes and budgets. Lake Clarke Shores predominantly features single-family homes with waterfront views, charming architectural styles like mid-century modern and ranch, and a serene neighborhood atmosphere. The median home price here tends to be higher, reflecting the exclusivity and lakeside access.

Lake Worth provides a more varied housing stock, from affordable single-family houses to condos and historic craftsman-style homes. Waterfront properties along the Intracoastal Waterway are particularly sought-after, blending urban convenience with scenic water living. Recent trends show steady appreciation in both markets, though property taxes and homeowner fees may differ between the two.

### Top Neighborhoods in Lake Clarke Shores

- North Shore Estates – Known for lakeside homes and quiet streets
- Lakeside Village – Offers newer construction with modern finishes
- Southlake – Family-friendly area near parks and schools

### Top Neighborhoods in Lake Worth

- Eversley Park – Historic district with vintage charm
- Downtown Lake Worth – Urban living with easy access to nightlife
- North Palm Park – Affordable family-oriented community

## Population Density and Demographics

Lake Clarke Shores boasts a lower population density compared to Lake Worth, supporting a tranquil, tight-knit community vibe ideal for those favoring privacy and spacious lots. Residents tend to be families and retirees with

a median age skewing slightly higher, reflecting the area's appeal to quieter lifestyles.

Lake Worth, as a larger city, features a diverse demographic profile with a mix of ethnicities, age groups, and income levels. It attracts professionals, artists, and young families drawn to its cultural vitality and affordable housing options. The median household income in Lake Clarke Shores generally exceeds that of Lake Worth, underscoring differences in socioeconomic status across these communities.

## **Community Parks, Recreation Facilities, and Outdoor Activities**

Both cities invest heavily in community parks and recreation, yet their offerings cater to different outdoor preferences. Lake Clarke Shores shines with its well-maintained lakeside parks, bike trails, and opportunities for boating and fishing. The village's recreational centers host fitness classes and youth programs, enhancing its family-friendly reputation.

Lake Worth offers a wider variety of parks, including dog parks, golf courses, and nature preserves like the nearby Green Cay Wetlands. Its beaches and marinas encourage water sports such as paddleboarding and sailing. Community events often take place in public parks, enriching the city's social calendar.

### **Popular Parks and Recreation Spots in Lake Clarke Shores**

- Burt Aaronson South County Regional Park – Multi-sport facilities
- Lake Clarke Shores Municipal Park – Lakeside picnic areas and playgrounds
- Water Ski Club – Private recreational facility for members

### **Popular Parks and Recreation Spots in Lake Worth**

- Lake Worth Municipal Beach – Public beach with amenities
- Palm Beach Par 3 Golf Course – Family-friendly golf
- Green Cay Wetlands – Nature trails and birdwatching

## **Local Schools and Education Quality**

Education is a high priority for families moving to either city. Lake Clarke Shores falls under a reputable school district featuring highly rated public and private schools with strong academic programs. Families appreciate the proximity to quality elementary and middle schools alongside extracurricular and youth development initiatives.

Lake Worth offers a greater number of educational institutions, including magnet and charter schools, reflecting its larger population size. School ratings vary across the city, so careful consideration of individual schools is advised. Both areas offer access to adult education and community youth programs, enhancing lifelong learning opportunities.

### **Top Schools Near Lake Clarke Shores**

- Palm Beach Gardens High School – Strong academics and athletics
- Pine Jog Environmental Education Center – Environmental programs for students
- St. David's School – Private schooling option with personalized attention

### **Top Schools in Lake Worth**

- Lake Worth Community High School – Advanced placement programs

- Cassidy Elementary School – Focus on STEM education
- Saint Luke's Catholic School – Well-regarded parochial school

## Public Transportation and Traffic Conditions

Lake Clarke Shores benefits from a suburban layout that results in lower traffic congestion and shorter average commute times, especially for residents working locally or in nearby cities. However, public transportation options are limited, making personal vehicles the primary mode of travel.

Conversely, Lake Worth is serviced by multiple bus routes operated by Palm Tran, connecting residents to regional hubs and the Tri-Rail commuter train. While traffic can be heavier particularly around downtown and commercial zones, walkability and bike-friendliness are stronger here, supported by ongoing infrastructure improvements to promote sustainable transit.

## Shopping, Dining, and Nightlife

Lake Worth leads as a cultural hotspot with a rich variety of eclectic shops, diverse dining experiences ranging from casual eateries to upscale restaurants, and an active nightlife featuring bars, live music venues, and art galleries. The city hosts regular farmers' markets and art walks, fostering a lively local business scene.

Lake Clarke Shores offers more understated shopping [Beauty Salon](#) venues primarily catering to everyday needs, with charming cafes and restaurants providing neighborhood dining experiences. For broader entertainment and retail options, residents often venture to neighboring cities.

## Healthcare and Public Services

Residents of both communities have access to excellent healthcare facilities within close proximity. Lake Clarke Shores is near several top-rated hospitals and specialty clinics offering comprehensive medical services suited for families and seniors alike.

Lake Worth's healthcare infrastructure includes emergency care centers, public health programs, and senior activity centers. Both communities maintain robust public safety departments and provide resources such as public libraries and volunteer organizations dedicated to enhancing resident wellbeing.

## Climate and Environmental Quality

Both Lake Clarke Shores and Lake Worth enjoy a tropical climate characterized by warm, humid summers and mild winters. However, Lake Clarke Shores' abundance of lakes and green spaces contributes to excellent air quality and a generally cooler microclimate.

Flood zones and hurricane preparedness are critical considerations for both areas, with each city implementing zoning laws and urban planning measures to improve resilience. Environmental sustainability efforts, including recycling programs and water conservation initiatives, are increasingly prominent in local policies.

## Employment Opportunities and Local Economy

The job market in Lake Worth benefits from its proximity to commercial districts and downtown core, hosting a range of employers in hospitality, retail, healthcare, and creative industries. Small businesses thrive here supported by local economic development programs.

Lake Clarke Shores' economy is more residentially focused but is close to major employment hubs in Palm Beach Gardens and West Palm Beach. Many residents commute to white-collar jobs, and the area has seen growth in professional services and real estate sectors.

## Historic Landmarks and Cultural Attractions

Lake Worth boasts numerous historic landmarks such as the Lake Worth Playhouse, historic districts, and murals that celebrate its artistic heritage. Annual events like the Lake Worth Street Painting Festival and cultural parades enrich community life.

Lake Clarke Shores, while smaller and newer in development, offers tranquil community centers and hosts seasonal events that emphasize outdoor living and family-oriented activities, fostering a strong sense of community pride.

## Final Comparison – Which Area is Right for You?

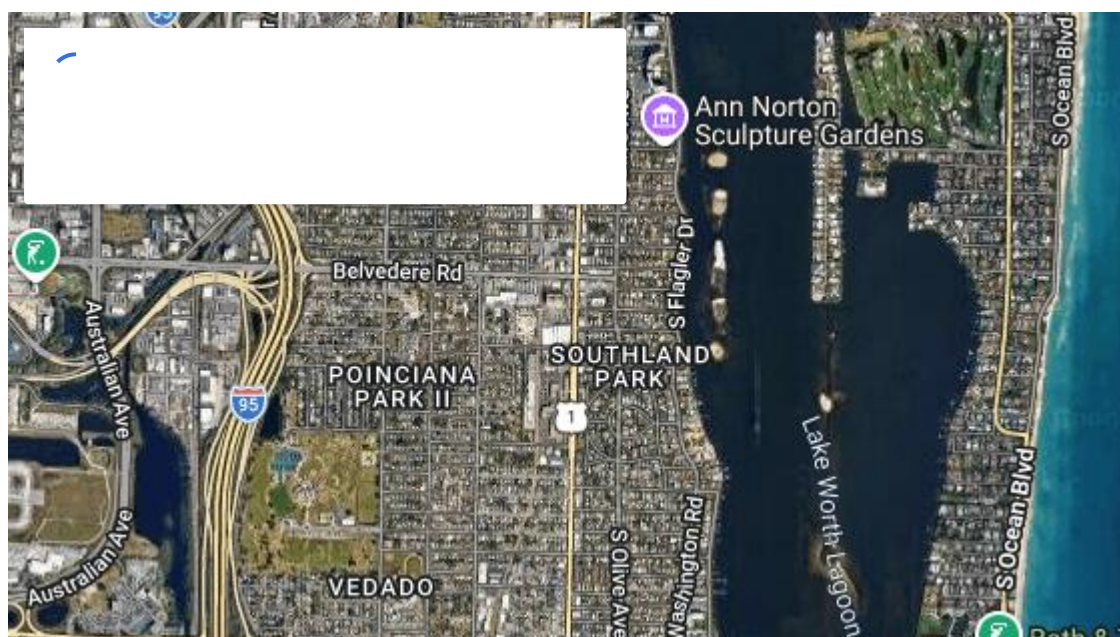
Choosing between Lake Clarke Shores and Lake Worth is largely influenced by lifestyle priorities. If you seek a quiet, upscale suburban setting with lakeside living, strong schools, and low density, Lake Clarke Shores stands out as an ideal choice.

On the other hand, if you prefer a culturally enriched urban environment with diverse housing options, walkable neighborhoods, active nightlife, and public transit access, Lake Worth offers a dynamic and affordable alternative. Both areas present promising real estate investment potential, but your decision should weigh factors such as commute preferences, community engagement, educational needs, and long-term growth plans. Engaging with local real estate professionals and visiting neighborhoods firsthand will provide valuable insight into making the best choice for your future home or investment.

## Frequently Asked Questions

### What are the main differences between Lake Clarke Shores and Lake Worth?

Lake Clarke Shores is a small, lakeside suburban village known for tranquility and higher median home prices, while Lake Worth is a larger, more urban city with a diverse population and a vibrant cultural scene.





### **Which city has better schools for families with children?**

Lake Clarke Shores generally offers higher-rated public and private schools, appealing to families prioritizing education, though Lake Worth provides more schooling options with a mix of performance levels.

### **How do housing prices compare between Lake Clarke Shores and Lake Worth?**

Homes in Lake Clarke Shores typically command higher prices due to waterfront locations and exclusivity, whereas Lake Worth offers more affordable housing, including condos and historic homes.

### **What are the crime rates like in each city?**

Both cities maintain community safety initiatives, but Lake Clarke Shores usually reports lower crime rates attributable to its smaller size and close-knit population.

Posh Boutique WPB

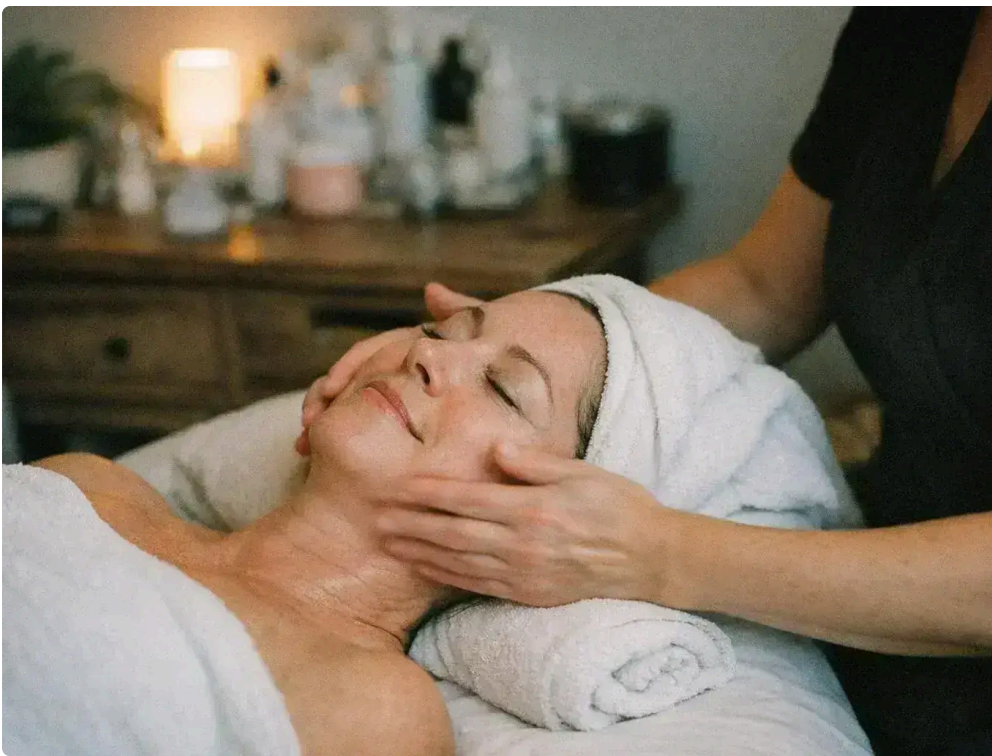
2807 S Dixie Hwy suite 44, West Palm Beach, FL 33405, United States

+15617727262

<https://maps.app.goo.gl/wZZcNJWXhknbAcx48>

### **Are there waterfront properties available in both areas?**

Yes, Lake Clarke Shores has numerous lakefront homes, while Lake Worth features waterfront properties primarily along the Intracoastal Waterway and nearby beaches.



### **What types of recreational activities are popular in each community?**

Lake Clarke Shores focuses on lake-related activities, biking, and family sports, while Lake Worth offers diverse outdoor pursuits including beach access, golf, hiking in wetlands, and vibrant cultural events.

### **How easy is it to commute from these cities to major employment hubs?**

Lake Clarke Shores offers quicker commutes by car with less traffic, while Lake Worth provides public transit options like buses and commuter rail, though traffic congestion can be heavier.

### **What public transportation options exist in Lake Clarke Shores and Lake Worth?**

Lake Worth benefits from multiple bus routes and proximity to the Tri-Rail system; Lake Clarke Shores has limited public transit, relying mainly on personal vehicles.

### **What community events and cultural festivals take place annually?**

Lake Worth hosts art festivals, street painting events, and music nights, reflecting its artistic culture. Lake Clarke Shores offers community gatherings, seasonal celebrations, and family activities focused on outdoor enjoyment.

### **How do property taxes differ between the two cities?**

Property taxes in Lake Clarke Shores tend to be slightly higher due to its affluent residential base, while Lake Worth offers comparatively moderate tax rates aligned with its broader housing market spectrum.

In conclusion, both Lake Clarke Shores and Lake Worth provide inviting living environments with distinct advantages. Your ideal choice depends on whether you prioritize suburban serenity and waterfront privacy or a lively urban atmosphere with rich cultural offerings. For tailored guidance and to explore current real estate listings, consider reaching out to local experts who can help you navigate these vibrant South Florida communities.