

The discussion around relocating electrical lorries used to start with a shrug. Place it on a truck, band it down, and go. That strategy is risky now. EVs bring high voltage systems, heavy battery packs, and software that regulates also basic features like neutral and hand brake. If you utilize the same playbook as a fuel auto, you welcome delays, damages, or a standoff on a domestic street when a winch meets a secured drivetrain. Great car transport for EVs calls for planning that values both physics and firmware.

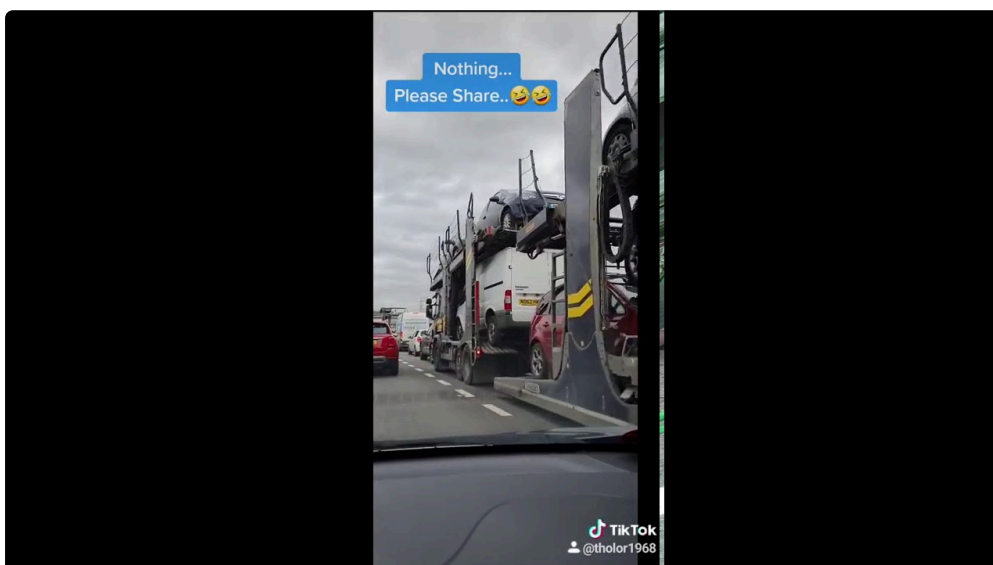
Why this matters to proprietors and logistics teams

The risks are not abstract. A mistake can turn into a battery guarantee disagreement, a thermal occasion on a vehicle deck, or a chain of cases that drags out for months. On the flip side, when a service provider comprehends EV quirks, the process is uneventful. The automobile shows up with the very same state of fee it entrusted, the underbody is unscuffed, and the costs of lading suits reality. I have seen both end results. The distinction often boils down to prep work in the half an hour prior to filling, and the method a dispatcher matches the ideal auto carrier to the job.

How EVs change the vehicle transportation equation

Start with weight. The majority of EVs weigh 800 to 1,500 extra pounds greater than equivalent gasoline models. A midsize SUV that would be 4,000 extra pounds as an ICE typically appears at 5,000 to 5,500 extra pounds as an EV. Weight influences the overall payload a truck can lawfully transport under government bridge formula limitations. A nine-car stinger that lots 9 compact cars could require to keep up seven EV crossovers to stay certified. That modifications your rate and your pick-up window, because the provider requires various products mix.

Ground clearance has a tendency to be tight on EVs with aero guards and battery trays beneath. That transforms a routine ramp angle right into a danger for front splitters or pack shields. I keep a mental list of troublemakers. Performance trims with sporting activity springtimes, aftermarket coil-overs, and long wheelbases can high focus if the motorist rushes. Low-angle packing ramps, race ramps, and patient driving fix it.



Then there is software application. Many EVs have a transportation or tow mode that launches the digital parking pawl and keeps the brakes from vehicle involving. Some bury it behind programmer food selections or need a functioning 12-volt system to accessibility. If the 12-volt battery is flat, you can meet a paradox. The high voltage

pack holds plenty of power, however the contactors will not close, and the cars and truck remains locked in park. A ready crew brings jump packs for the low-voltage system and understands where the manual charge factors live.

Thermal behavior issues as well. Batteries do not such as to rest at one hundred percent state of charge in hot sun, neither at 5 percent in subfreezing cold. Lengthy dwell times on a warm leading deck can push temperatures up, particularly if the BMS can not run energetic cooling while the vehicle is powered down. The appropriate carrier plans state of fee targets to protect both chemistry and timeline.

Matching the automobile to the best vehicle transporter

Think regarding carrier kind early. A standard stinger-steer with open decks works for a lot of retail EV actions. For high value lorries, fars away with severe weather, or any automobile with very low clearance, enclosed is more secure. The rate void in between open and enclosed varies with market conditions, yet 30 to 60 percent greater for enclosed prevails on North American paths. That costs buys you liftgates, gentler angles, and a sealed setting that maintains wintertime brine off light weight aluminum suspension parts and battery housings.

Weight clusters matter when a dispatcher constructs a load. If your EV is on the heavy side, sincere aesthetic weight numbers help the service provider setting it appropriately on the trailer. I have actually seen a vehicle driver reshuffle an entire deck at an evaluate terminal because two heavy EVs sat atop the tractor axles and pushed axle weights over the limit. Ten additional minutes at pick-up to put weight where it belongs would certainly have conserved an hour of roadside juggling.

Battery state of fee, billing logistics, and dwell

State of fee is not an afterthought. The majority of makers suggest delivering EVs between 30 and 60 percent. That band provides margin for alarm system occasions that need complementary power, keeps pack voltage at a degree that does not stress cells during heat, and prevents low-temperature efficiency cliffs in winter. If a vehicle will rest at a yard for days, every 5 percent of cost is important insurance.

Charging gain access to throughout vehicle transport is erratic. Many storage space lawns do not offer Degree 2, and drivers can not melt hours of solution waiting at public DC quickly chargers with a crammed rig. Plan the beginning and destination to deal with any kind of charging requirements. If a driveway pickup starts at 10 percent in January, and the route consists of a rail head where the car may rest for a week, do not count on the system to connect the gap. I ask proprietors to hand off at 40 to 50 percent unless the OEM specifies a more stringent cap.

If the car has actually an arranged software update queued, clear it or stop it prior to pick-up. Mid-transport updates have stranded vehicles in deep sleep with service setting involved. An auto that looks fine on a picture examination can become a winch-resistant brick due to the fact that it is mid-flash.

Safe loading, tie-downs, and underbody protection

Tie down factors on EVs are usually not where drivers anticipate. Many producers follow J-hook criteria, yet plastic aero panels can hide enhanced points. If a service provider hunches and wraps a strap around a reduced control arm or subframe notch implied just for lift points, the threat is silent damages. I favor soft bands around marked frame eyes or the wheels with wheel nets where allowed. Over the tire is secure, offered the wheel style approves a net without getting in touch with sensors or finish.

Winching calls for caution. Some EVs need tow setting energetic to enable rolling, others need a screw-in tow eye threaded into the front or rear bumper. Maintain a tidy tow eye in the trunk along with its plug device. The variety

of times we have dug with a frunk for a tow eye while obstructing a lane is greater than I care to admit.

Underbody contact is an additional danger. Battery trays sit reduced and vast. An informal slide throughout a steel deck can mess up a pack guard. That normally looks cosmetic yet can cause guarantee headaches later. Ask carriers to use skates or safety mats if clearance is limited, and demand sluggish, controlled loading. Seconds saved quickly angle typically set you back hours later.

Documentation, images, and responsibility guardrails

The expense of lading is your buddy if made use of effectively. Walk the cars and truck with the chauffeur, shoot date-stamped images of each edge, the roofing, wheels, and underbody if available. Picture the odometer and the state of fee on the dashboard. If transport setting is engaged, snap that as well. Document any kind of pre-existing damages with exact area and dimension. This is not an adversarial step. Great vehicle drivers choose clear proof, because it shields them when a rock chip or visual rash gets condemned on the truck.

Confirm insurance coverage specifics in creating. At a minimum, you want existing cargo protection that matches the automobile's value and a plan number you can call if things fail. If the EV is a six-figure construct, do not accept obscure statements about covering protection. Ask for a certification that lists the limits per event and accumulation. See to it the policy does not exclude electrical or hybrid vehicles. It sounds weird, but I have actually seen cargo plans with carve-outs that left EV damage in a gray zone.

Choosing between open, encased, and driveaway

Modes each bring trade-offs in expense, danger, and timing. The appropriate choice depends upon vehicle value, route, and schedule pressure.

- Open provider: Least expensive expense, fastest schedule, however exposure to weather and roadway debris. Functions well for everyday vehicle drivers and fleet relocations where minor aesthetic threat is acceptable.
- Enclosed service provider: Higher price with far better protection, liftgates, and reduced ramp angles. Best for high worth automobiles, long wintertime courses, and reduced clearance builds.
- Driveaway: A professional motorist runs the vehicle point to factor. No loading threat, but includes gas mileage and relies on billing framework. A suitable for short hops or urgent actions when trailers are scarce.

If you go driveaway for an EV, route preparation ends up being a charging exercise. A skilled chauffeur can weave trusted terminals together, yet limited home windows with billing deserts in winter can unwind a timetable. It is feasible, simply not something to wing on a Friday mid-day with a Sunday distribution promise.

Temperature, elevation, and route design

EV chemistry responds to cold and heat. On summer season runs across the Southwest, I favor confined lower decks to restrict solar load. If open is the only choice, presenting the automobile on a shaded setting during lunchtime breaks assists. Lengthy climbs up at altitude can challenge regenerative stopping assumptions as well. If an automobile is powered down and safeguarded, none of this is significant, but dwell at a hot rail yard with blacktop and no air movement makes a difference.

Winter complicates logistics in subtler methods. State of cost drops quicker at rest, 12-volt batteries droop, and transportation setting motivates may break quicker. Ask the service provider regarding their winterization practices. A motorist that brings a secured external 12-volt source, shielded wheel webs that do not freeze rigid, and de-icer for fee port doors is assuming ahead.

International and rail: ports, RoRo, and containers

International EV shipping adds one more layer. Roll-on roll-off is affordable but expects a drivable vehicle with a moderate state of charge and a working 12-volt system. Service providers in some cases top SOC at port entry to 30 or 50 percent to minimize fire danger. If the lorry shows up above that, port staff may decline it or hold-up while they dissipate cost, which is not suitable. Container delivery protects the automobile yet includes time, custom-made actions, and lift threats. Safeguard the lorry by wheel, not by underbody points that load the battery instance. Mark high voltage disconnects for very first responders, and consist of OEM advice in a noticeable sleeve.

Rail is common for manufacturing facility to warehouse moves. Rail ramps can be high, and direct exposure to triggers or debris in older backyards is genuine. Wheel net methods are basic, and the rail service provider often specifies SOC targets. If you are sending out a high value customer auto by rail, talk through insurance policy **car transport Bay Area** thoroughly. Rail asserts processes move at rail rate, which is not known for agility.

Fleet steps, business relocations, and timing

When you relocate a fleet of EVs, such as 20 crossovers for a business relocation program, the tiny problems increase. Backyard area with charging accessibility comes to be the constraint. One relocation I supported consisted of a week at a short-lived lot near a hub flight terminal. We rented portable Level 2 systems and organized a short-term electrical authorization to maintain automobiles at 40 percent while drivers turned loads. The license lag almost derailed the plan. Since then, I validate power early and consider staggered pickups to minimize dwell.

If you are a supplier exchanging supply with shops in another state, agree on SOC targets and note them on the deal sheet. I have seen trade-ins arrive hot from a DC session suggested to please the customer on the other end, only to cause a storage space headache while paperwork gets rid of. Easy coordination fixes this.

Salvage, unusable, and high voltage safety

Damaged EVs demand caution. If the pack took an influence or reveals error codes about isolation faults, treat it as a high threat. Some backyards use fire blankets or isolation containers for transport. Others refuse packed battery vehicles with noticeable swelling or coolant leakages. If the wheels will not roll and the drive system will not disengage, bring skates or go-jacks. Never raise a damaged EV by underbody plastic or unidentified structural factors. Tie down by wheel only, and keep the vehicle far from warm sources in the yard. Communicate with insurance companies about storage area choices that value safety advice without incurring insane tow fees.

Preparing your EV for shipment

A little owner prep gets rid of most of the friction. Right here is the list I give clients before pickup.

- Set state of charge to roughly 40 to 60 percent, unless your supplier recommends differently.
- Enable transportation or tow setting, and verify you know the path to re-enable it if it breaks. Area the tow eye and vital card or fob in a known location.
- Photograph the auto, in and out, consisting of wheels and underbody if you can. Record the odometer and SOC on the dash.
- Remove personal products, aftermarket gadgets that dangle near pedals, and any kind of home charging wires you would despise to lose.

- Note any type of peculiarities. If the 12-volt battery is weak or an update is pending, inform the dispatcher in creating so the vehicle driver brings the right gear.

If your automobile utilizes an immobilizer or PIN to drive function, disable it for pickup and orient the driver on just how to manage it at shipment. Include that to the costs of lading notes.

Vetting a service provider for EV competence

Ask straight inquiries. How many EVs has the firm relocated the in 2015 on the appropriate route. Do their vehicle drivers carry 12-volt boosters and torque sticks pre-set for your wheel specifications. Can they show a composed procedure for EV tie-downs by make. Do they have a prepare for battery occurrences when traveling, consisting of control with neighborhood fire divisions. A dispatcher who speaks particularly about charging restrictions at lawns, transportation setting timeouts, and tow eye places is not guessing.

Watch exactly how they speak about timelines. EV relocations do not have to be slower, yet when a service provider acts every work equals, they often tend to cut corners. Sincere talk about home windows and contingencies builds trust. I choose partners that set a 2 to five day pickup window for cross-country retail moves and have the variables, rather than assuring a Tuesday morning truck that develops into Friday night.

Costs, timelines, and what is realistic

Rates turn with diesel rates, lane balance, and period. As a rough feel in The United States and Canada, open transport on usual lanes frequently runs 60 to 90 cents per mile for retail customers, rising to 1.20 to 2.00 dollars per mile for confined. Short city jumps can look high on a per mile basis as a result of fixed time expenses. EV specifics can include additional charges if the lorry is extra-large, unusable, or calls for special ramps. If your EV considers a lot over 6,000 pounds, discuss it up front. Obese permits are not common for light lorries, however axle positioning adjustments matter.

Transit times are about the like ICE automobiles. What changes is predictability when climate is extreme, because drivers take extra treatment loading. Include a day to a limited plan if you are crossing hill comes on winter months with a reduced clearance auto. If you require ensured distribution days, be ready to pay for a specialized system. Consolidated loads depend upon matching freight, which is fickle throughout holidays and quarter ends.

Edge instances worth believing through

Modified suspensions and aero kits look excellent yet make complex ramps. Bring mobile ramp extensions if you have them, and flag them to the dispatcher. Widebody kits that prolong the wheel arch lips can conflict with wheel nets. In those instances, over-the-tire bands could need protective sleeves, or the service provider ought to switch to mount eyes if the OEM permits it.

Some lorries hide neutral or transport mode behind a service login that proprietors can not access. Coordinate with a service facility to toggle it at pick-up if needed. Write that visit right into your timeline. When software program locks you out, a motorist can not improvise without risking damage.

If your EV is kept for weeks at a location, ask the yard about parasitical draw procedures. Some place cars on upkeep charge, others detach the 12-volt battery. Each choice has consequences for alarms, locks, and telematics. Make your choice clear in writing.

What a smooth EV move feels like

When it goes well, the day is tiring in the best way. The motorist gets here with chocks, soft bands, and a clean deck. You both walk the automobile, note an old door ding, and agree on SOC. Transportation mode goes on without drama. The tow eye beings in the glovebox, but it stays there. Filling is silent and sluggish. A couple of days later, your phone rings with a heads-up and a two hour distribution home window that holds. The vehicle rolls off in the exact same problem, your pictures match the bill of lading, and SOC sits within a couple of percent factors of pickup. Not a surprises, no chase calls, and no guesswork.

That result is not good luck. It is the item of a service provider that appreciates EV specifics, a dispatcher that chooses the right tools, and a proprietor who does small points that set up success. Car transport is not attractive. It is logistics in the margins: the appropriate ramp angle, the appropriate tie-down point, a 12-volt dive at the right time, and a proof that keeps everyone honest.

Bringing everything together

Electric automobiles are not fragile, but they are specific. Shape the walk around their particulars. Choose a cars and truck carrier who can reveal skills, not just self-confidence. Aim for a state of fee that keeps the battery satisfied while the car sits. Regard weight and clearance truths so the load stays *non-running car transport* lawful and the underbody stays immaculate. Strategy charging where it belongs, at origin and destination, not throughout the haul. Deal with documentation as an ally.

Do those points and EV shipping looks ordinary once again. Regular, in this context, is a compliment. It indicates the car transport world has actually absorbed a new course of equipments without dramatization, and your car shows up ready to drive, with its batteries, bodywork, and service warranty satisfaction intact.