

Explore the intriguing and varied climate conditions that represent Irving, Texas. Regardless of whether you're planning a stay, thinking about relocation, or simply interested in the local climate, this extensive report presents comprehensive insights into heat changes, precipitation levels, severe weather phenomena, and many other aspects. Uncover how Irving's special geographical location influences its climate and find useful tips to manage its weather across the year.

## Outline of Irving's Climate

Irving, TX, situated in the center of the Dallas-Fort Worth metropolitan area, features a humid subtropical climate characterized by hot summers and mild winters. Located in the Köppen climate classification zone Cfa, the area enjoys a wealth of sunshine year-round with clear seasonal variations.

The local climate classification indicates a mix of warm temperatures, moderate to high humidity, and an average annual precipitation that nurtures vigorous vegetation and wide-ranging outdoor activities. Urban development creates localized microclimates through the urban heat island effect, causing the city a bit warmer than surrounding rural areas.

Irving's climate depends on regional atmospheric conditions such as jet stream patterns, occasional cold fronts moving southward from Canada, and moisture influxes from the Gulf of Mexico. These factors work together to produce a variable weather system that residents and visitors alike should recognize to prepare effectively.

## Temperature Changes and Seasonal Transitions

Temperature in Irving fluctuates considerably over the course of the year, with distinct shifts between seasons. This difference influences everything from outdoor recreation to energy consumption and gardening practices.

The city undergoes an average annual temperature range stretching roughly from lows near freezing in winter to highs well above 90°F in summer. Temperature anomalies can happen, leading to short-term heat waves or cold snaps influenced by cold and warm fronts moving across the region.

Wind chill factors in winter and heat index measures during summer are crucial in how temperatures seem, modifying daily comfort levels and safety considerations. Early frost dates typically appear in late fall, while the last frost often arrives in early spring, which is important for agricultural and horticultural planning.

### Warm Season Weather Traits

Warm months in Irving is noted for elevated temperatures frequently climbing above 95°F, along with increased humidity levels that amplify the perceived heat. The combination of heat waves and strong UV index values demands vigilance for heat-related illnesses, especially among susceptible populations.

Sunshine hours are at their maximum in summer, delivering ample daylight for outdoor activities but also raising evapotranspiration rates, which can affect plants and increase water needs. Residents often use air conditioning to alleviate indoor heat due to the long-lasting warm season.

### Cold Weather Climate and Cold Months

Cold periods in Irving are generally moderate with daytime temperatures between the mid-50s to low 60s Fahrenheit. However, cold fronts periodically usher in colder air, leading to drops in temperature, wind chills, and short frost periods.

Snowfall is infrequent but happens; when it does occur, it's usually gentle and dissolves fast. Dew points can fall markedly during cold spells, [Look at this website](#) creating clear, transparent conditions. Occasional freeze warnings are given to safeguard sensitive vegetation and to alert residents to expect chilly nights.

## Rainfall and Rain Trends

Irving experiences an average annual precipitation of about 38 to 42 inches, distributed mostly from spring through early fall. Rainfall intensity can vary dramatically, affected by thunderstorms common in the region and varying moisture contributions from the Gulf of Mexico. These rain events contribute to replenishing groundwater and supporting green spaces.

Periods of drought do occur intermittently, affecting local agriculture and increasing wildfire risk. Conversely, heavy rainfall events can produce localized flooding, especially in areas with poor drainage or near waterways.

Thunderstorms are a regular feature of Irving's weather, often with hail which can cause property damage, especially in the late spring and early summer months.

## **Winter Precipitation Events**

While snowfall is infrequent in Irving, ice storms periodically strike the region, bringing slippery conditions and potential power outages. Freeze warnings and frost advisories are important alerts for residents to safeguard plants, pipes, and vehicles during colder episodes.

Frost formation during clear, calm nights in winter can create hazardous driving conditions in certain areas, making awareness and preparedness important during those times.

## **Air and Weather Conditions**

Wind patterns in Irving vary throughout the year, with average wind speeds ranging from light breezes to stronger gusts during storm events. Tornado activity is a serious concern in North Texas, and Irving has been affected by tornadoes in the past, highlighting the need for strong tornado response strategies.

Lightning and variable barometric pressure during storms can disrupt outdoor events and affect sensitive persons. Air pressure shifts affect meteorological tracking and forecasting, particularly as high-altitude winds traverse the region, directing weather movements and influencing city weather.

## **Extreme Weather and Notable Occurrences**

Irving faces several types of severe weather risks, including tornados, hailstorms, flooding from heavy rains, and heat waves. Severe weather alerts are routinely issued by the National Weather Service to help residents take timely precautions.

Past data indicates hail has harmed roofs, cars, and agricultural products, while flooding has impacted low-lying neighborhoods during intense rainfall. Lightning represents an additional danger in storm seasons, underlining the importance of staying indoors during severe weather.

## **Climate Variability and Long Term Trends**

Irving's long-term climate trends indicate warming and heightened rainfall variability. Such shifts correspond with wider climate change effects seen in Texas and the southern US.

El Niño and La Niña events modify seasonal climate variability, impacting precipitation and temperature. Typically, El Niño results in wetter winter seasons, whereas La Niña is associated with drier periods.

Continuous monitoring emphasizes the requirement for climate resilience, fostering community adaptation to evolving extremes and robust infrastructure planning.

## **Local Climate Variations and Weather Effects in Irving**

Irving's urban areas produce microclimatic zones caused by heat retention in urban settings, where constructed regions trap and store higher heat levels compared to rural surroundings. Topographical elements including altitude variation and presence of water shapes small-scale weather patterns.

Climatic stations strategically located throughout Irving deliver detailed data that reflect these microclimate variances, enhancing the accuracy of local forecasts and weather advisories. Comprehending these subtle differences supports residents and businesses plan better for daily weather conditions.

## **Weather Monitoring and Forecasting in Irving**

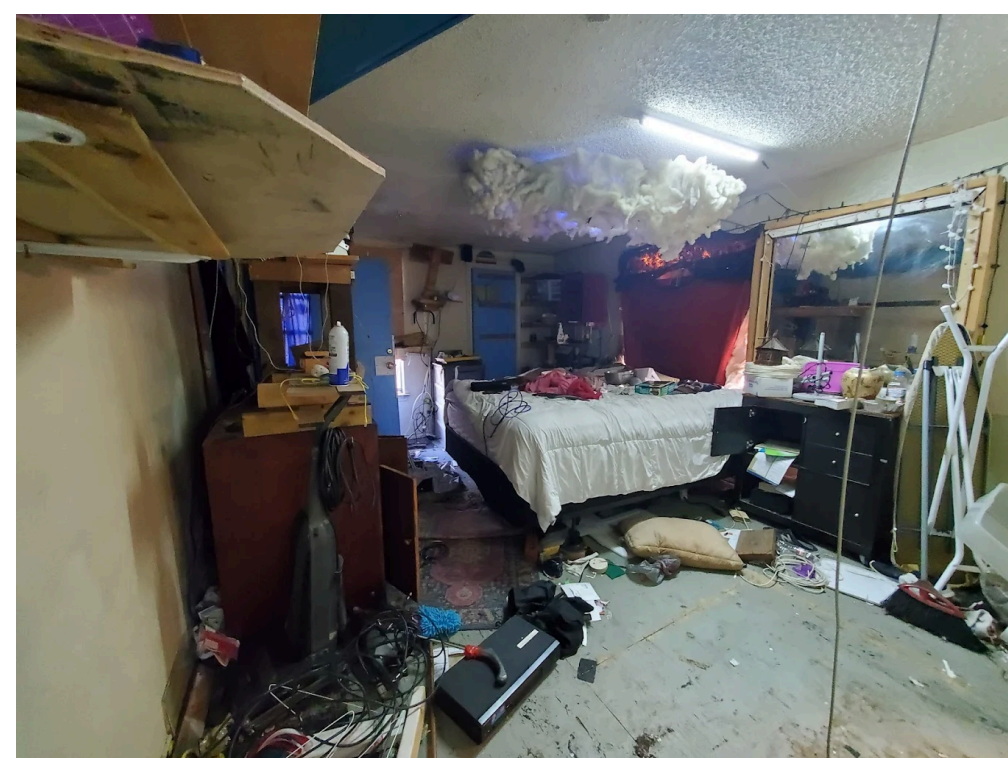
Trustworthy weather forecasting in Irving is aided by advanced meteorological tools such as Doppler radar, satellite imagery, and automated weather stations. These technologies enable timely weather alerts and storm tracking to shield the population.

Local meteorology centers work with national agencies to supply detailed climate statistics and trend analyses. Real-time weather monitoring supports effective local weather advisories and emergency response coordination during extreme events.

## Practical Tips for Residents and Visitors Regarding Irving's Weather

- During summer heat waves, stay hydrated, reduce time outside during the hottest part of the day, and wear sunblock against UV rays.
- In winter, wear layered clothing to adjust to temperature fluctuations and insulate pipes and safeguard sensitive plants against cold spells.
- Check local weather warnings frequently, especially during tornado season, and create a family emergency plan with shelter access.
- Be cautious during heavy rainfall events by avoiding flooded areas and maintaining proper drainage around your property.
- Gardeners must observe freeze dates to defend crops and utilize native drought-adapted plants for fluctuating precipitation.
- Be aware of air quality indices if you experience respiratory conditions, mainly on warm and polluted days.

## Frequently Asked Questions About Irving's Weather



## **What is the average temperature range in Irving, TX throughout the year?**

Irving's temperatures generally fluctuate between lows around 32°F in winter and highs above 95°F in summer, with spring and fall offering milder and more comfortable conditions.

## **How much rainfall does Irving typically receive annually?**

The city averages approximately 40 inches of precipitation annually, with most rainfall happening in spring and early summer storms.

## **Does Irving experience snow, and if so, how often?**

Snow events are infrequent in Irving, usually occurring once every few years, with most winters reporting negligible to no accumulation.

## **What categories of intense weather need to those living in Irving get ready for?**

Cyclones, hail events, flash floods, and heat spells are the primary dangerous weather conditions in Irving, calling for appropriate preparedness actions.

## **How exactly does the Irving climate vary by the seasons?**

Summer months are warm and moist, the winters remain moderate though sometimes brisk, while spring and fall bring mild temperatures and fluctuating precipitation trends driven by front movements.

## **Are particular weather patterns frequent in Irving?**

Irving periodically encounters urban heat island effects, strong storms accompanied by hail, and intermittent tornado occurrences due to its location within "Tornado Alley."

## **How precise are Irving's weather reports, and where can they be found?**

Weather predictions are very reliable due to advanced observation tools and are available via local weather stations, National Weather Service web platforms, and apps focused on North Texas weather.

## **How do major climate cycles like El Niño and La Niña affect Irving?**

El Niño generally brings wetter and cooler winters, while La Niña frequently leads to hotter, drier conditions, affecting seasonal precipitation and temperature patterns.

## **What steps are recommended during heat waves in summer or cold fronts in winter in Irving?**

When heat waves occur, stay sheltered indoors if feasible, drink plenty of water, and limit intense physical activity. When cold fronts arrive, dress in layers, take care of plants, and anticipate quick temperature declines.

## **Closing: Coping with Irving's Fluctuating Weather Effectively**

Comprehending Irving, TX's weather and climate is vital for locals, tourists, and all who engage with this lively city's atmosphere. From sultry, moist summers to gentle yet sometimes chilly winters, Irving's climate requires vigilance and readiness for diverse conditions.

Keeping up to date on temperature shifts, rainfall tendencies, severe weather dangers, and enduring climate variations helps you adjust and prosper in this part of North Texas. Use local weather resources and pay attention to official updates for continuous protection and ease.

Whether your focus is on outdoor plans, gardening, or home defense, mastering Irving's weather gives you the confidence to decide wisely and relish all aspects of this dynamic city.