

Dallas builds immediate and rebuilds ceaselessly. Between ground-up towers in Uptown, health center expansions along I-35E, airport paintings at DFW, and regular internal reconfigurations in legacy place of work towers, contractors face a widespread squeeze: tight schedules, tight budgets, and limited tolerance for surprises. 3D laser scanning sits accurate in that rigidity element. It captures latest conditions with millimetric readability, converts unknowns into measurable geometry, and retains coordination arguments from derailing every week of labor. Done smartly, it shortens RFIs and substitute orders. Done poorly, it creates fake self assurance that expenses more than ordinary container verification.

I actually have used 3-d scanning on heavy MEP retrofits, façade reclads, and tenant improvements throughout North Texas. The technology seriously isn't a cure-all, however it's a pressure multiplier whilst scoped and added thoroughly. If you might be evaluating a 3-D Laser Scanning Service Dallas suppliers offer, or brooding about when to invest as opposed to stick with tape, laser distance meters, and as-builts, this instruction manual lays out what matters.

## **What 3D laser scanning easily offers you**

A terrestrial laser scanner spins a lidar sensor and digital camera to measure thousands and thousands of facets according to second. Each test produces a point cloud, a 3-d subject of coloured elements that characterize surfaces. Multiple scans are registered mutually right into a unmarried coordinate manner, developing a measurable virtual photograph of your area. You can pan simply by it in unfastened viewers, take dimensions, or use it as a connection with construct items in Revit, AutoCAD, or MicroStation.

The key outputs fall into three buckets. First, the uncooked registered level cloud, the closest component to the verifiable truth of the web site. Second, a mesh or decimated cloud for visualisation and clash detection, remarkable whilst the overall selection is overkill. Third, a modeled deliverable, comparable to an LOD two hundred to LOD 350 Revit version of construction, architectural services, and MEP tactics. On some projects one can additionally prefer 2D sheets: plan and elevation slices, annotated via the scanning corporation. Those sheets are immediate to make use of in sub meetings and frequently evade further software program quotes for smaller trades.

Accuracy is dependent on scan density, device magnificence, registration manner, and keep an eye on. On widely wide-spread interiors, count on 2 to four millimeter relative accuracy inside of a room and five to 8 millimeter across a suite, increasing as spaces get bigger and tying scans to survey manage. Outdoor long-number paintings round facades and location utilities sometimes aims 5 to 10 millimeter. If you need larger, you would pay for it. If you do now not define accuracy, you might not get what you anticipate.

## **When scanning will pay off in Dallas**

Not every task justifies scanning. In North Texas, I have obvious the most powerful go back in a handful of scenarios.

Renovations internal hospitals, labs, and facts facilities gain notably. Above-ceiling congestion and hot work limitations make guesswork steeply-priced. A unmarried coordinated conflict avoidance flow can save days of shutdown planning at Parkland or UT Southwestern. Historic homes downtown with heavy structural surprises also qualify. Granite and brick facades hide memories of undocumented metallic and transferring slabs, and a weekend of façade scans prior to store drawings can rescue a submittal log.

MEP-heavy tenant advancements over kind of 10,000 square feet see well importance, primarily in towers along the Tollway and in Las Colinas in which legacy shafts and offsets hardly fit 20-12 months-previous as-builts. Industrial and distribution retrofits around the I-20 corridor involve long sight traces and roof deflections, and scanning catches rod sag, camber, and crane rail inconsistencies that topic for racking and conveyors. Site work and application mapping on campuses like DFW Airport also profit, extraordinarily while coordinating with survey manipulate and GIS records.

Complex, excessive-tolerance trades get the most out of the statistics. Sheet metallic prefabrication, stainless course of piping, and architectural millwork are clear winners. Structural metal modifications and embeds can go either method. If the scope is small, manual verification may also suffice. If you're putting multi-ton steel on weekends with constrained crane time, scan it.

## **How to scope a 3D Laser Scanning Service Dallas project**

Start with the selection you really want to make. Do you prefer a aspect cloud in simple terms, together with your workforce construction the style? Or do you desire a scan-to-BIM provider with described modeling stages and sheet deliverables? Price, time table, and chance all waft from this.

Define the space and the intensity. Do you need floor, partitions, ceiling grid, and obvious MEP, or do you want to pop tiles and scan plenum house? Above ceiling scanning multiplies setup counts and time yet offers the important files for duct and conduit routing. State even if lids would be eliminated by way of your team or by means of the scanning seller. Spell out get entry to home windows, fairly for hospitals, airports, or secure tenants. Night scanning has much less foot traffic and open corridors, which reduces occlusions and improves registration.

Specify accuracy and manage. If you want inter-business alignment across more than one flooring or wings, identify survey management with objectives tied to a not unusual coordinate approach, mainly State Plane Texas North Central, or the venture grid. Ask the carrier how they'll constrain flow on long corridors and multi-floor stacks. If you do no longer plan for keep an eye on, one could get slight misalignments that erode trust whilst subs measure wildly the different dimensions.

Clarify the deliverable structure. Revit variants subject. So do level cloud formats. Most known contractors in Dallas can manage RCP/RCS for Autodesk, but many civil and fabrication workflows choose E57, PLY, or LAS. Confirm regardless of whether the company will clip and phase the cloud to event your degree splits and sheet sets. Confirm colorization from HDR imagery if that helps discipline review. Decide regardless of whether you would like listed, decreased-resolution clouds for quick fly-throughs, in addition to full resolution for distinct dimensioning.

Schedule with realism. A mid-length interior of 30,000 rectangular feet with above-ceiling can take 2 to four nights to scan, per week to check in, and yet one more 2 to 3 weeks to form core architectural and MEP traits to LOD 200 to 300. Add extra time for upper degrees of modeling detail or for messy existing circumstances that degrade line-of-sight. If you are scoping a fast chase in Victory Park with stream-in looming, stay away from reserving modeling beyond what's going to drive the submittals and prefab. You can constantly add aspect later.

## **Field realities that separate brilliant information from negative data**

Scans are merely as true as the setups. Experienced crews plan for coverage, occlusion, and registration loops. They find the tripod to look past columns, above obstructions, and into returns. They watch for vivid surfaces like stainless or mirrors that will throw noise, and they modify choice to seize small edges with no amassing needless amount.

Busy spaces create relocating objectives. A crowded administrative center can corrupt colorization and ghost relocating humans into the cloud. Facilities like UT Southwestern have strict irritation control chance comparison steps. Use detrimental air machines and HEPA barriers to retain mud down while relocating ceiling tiles, and coordinate with services to prevent tripping fire alarms with the aid of stirring up particles. Hospitals also require line-of-sight handle of methods and badging, so plan for escort time on your budget.

The experiment team must track each and every transient reference objective. Paper checkerboards paintings but can peel or shift. Spherical aims and unfashionable-reflective stickers are better for consistency, although they money extra and take time to vicinity. Photogrammetry can complement scanning for excessive coloration fidelity on facades, however you need to arrange lights and lens distortion. On outdoors work, wind shakes the tripod and creates blurred issues. Weighted tripods and shorter exposure settings mitigate it.

Most registration error teach up as stair-step misalignments at edges and overlaps. Insist on registration studies, now not simply quite screenshots. A smart record shows imply and most residuals, wide variety of constraints according to setup, and a visible of loop closures. Ask for a fast joint stroll in the point cloud viewer to investigate extreme tie-ins, like risers [professional 3D services Reality IMT](#) that span flooring or structural columns that go due to ceiling slabs. This 5-minute sanity fee can shop rework.

## **Modeling phases and wherein to stop**

Contractors broadly speaking overspecify fashion element. It is tempting to invite for LOD 350 across the whole lot as it feels more secure. That preference can double your can charge and still no longer build up your confidence in crucial conflicts. Focus detail the place it drives a selection. For instance, on a lab, you would ask for concrete columns and beams at LOD three hundred with genuine faces and chamfers, slab edges at LOD 300 with variable thickness in which they topic, partitions at LOD two hundred, door swings at LOD 200 until the millwork relies on it, and all latest duct mains over eight inches, plus all drops to instruments, at LOD 300 with hangers generalized. Pipes over 2 inches and conduit runs over 1 inch get LOD three hundred to the quantity they keep an eye on pathing. Smaller raceways are mostly modeled as bundles unless element of a constrained chase.

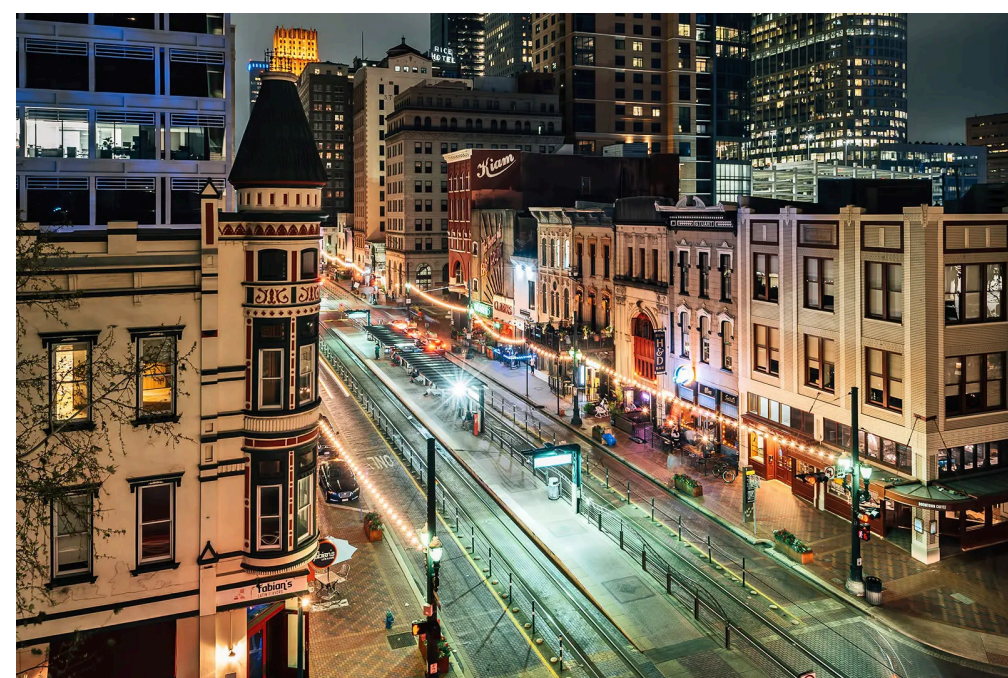
For architectural qualities in historic shells, ask the scanner to model basically the management geometry you want for shop drawings: jamb places, sill heights, disclose depths, and bow measurements with tolerances. Meshes of ornament

can look dazzling yet infrequently translate into fabrication cost unless you're 3-d printing molds or CNC milling substitute profiles.

Keep one eye on dossier length. A element cloud of a multi-flooring protection can exceed a hundred gigabytes. If your staff will work far flung on resort Wi-Fi close to Love Field, insist on clipped, sectioned clouds and smaller running units. Storage and bandwidth count when groups are scattered across subcontractor offices from Plano to Arlington.

## Price expectations and methods to examine quotes

Rates fluctuate across Dallas. For terrestrial scanning with mid to high-stop devices, you're going to in many instances see day prices between 2,000 and four,000 greenbacks which includes a two-someone staff. Registration might run 1,500 to three,000 funds in line with day of scanning, based on complexity. Modeling levels widely. A blank inside at LOD two hundred may cost 1.25 to 2.50 bucks according to sq. foot for architecture merely. Adding MEP can double that, exceptionally above ceiling. Complex plant environments with dense piping incessantly require time and ingredients with a rough order estimate. If a quote is dramatically lower, fee the scope and ask about accuracy, management, and deliverable definitions. If it's far dramatically bigger, it is going to come with top rate nighttime work, heavy manage surveys, or better LOD.



When comparing three-D Laser Scanning Dallas providers, overview enjoy for your development type. A firm that scans oil and fuel flowers all day can cope with a lab, however they might overshoot on point of element. Conversely, a company who focuses on tenant upgrades would underestimate business tolerances. Ask to peer an identical deliverables, not advertising reels. Look for a sample Revit file with view templates, named perspectives, and accurately categorized households in place of commonplace geometry jammed into an in-location mass.

## Integration along with your coordination workflow

Most contractors coordinate in Navisworks or in Revit promptly. Point clouds are heavy, so set expectations for overall performance. Index clouds to RCS, use segment bins, and cargo best what you want. Keep a grasp composite style with aspect cloud references off via default to hurry up beginning. For trades that do not possess Revit, deliver Navisworks NWDs with embedded aspect clouds or pre-sliced orthographic perspectives exported as PDFs.

For deviation exams, outline tolerances. A 1/2-inch lateral shift won't depend for duct but may break glass curtain wall alignment. Use automated conflict best for extensive sweeps, then depend on human judgment. Point clouds do now not recognize what is versatile duct as opposed to inflexible, or what can transfer in the course of install. Every week, evaluation two or three quintessential locations in a coordination stand-up with the cloud visible. Use that time to ascertain hanger zones, seismic bracing, and fireproofing thickness, which should be light to miss.

Field groups take pleasure in certainty trap whilst it feeds structure. If your scanning workflow hyperlinks to robot overall station facets, create handle traces and grid intersections internal your adaptation that healthy the cloud. Use the experiment to verify that the slab edges and column faces reflect the unquestionably website online, then push features to devices just like the Trimble RTS. This reduces tapped out chalk strains and tape pulls.

# Working round Dallas constraints

Dallas tasks juggle get right of entry to, protection, and climate. Highrise interiors downtown ordinarily share elevators, so a scanning group with a Pelican case and tripod demands early morning precedence or evening get right of entry to. Hospitals and labs require an infection handle plans and history checks. DFW Airport paintings calls for badging and escort. All of this adds truly time. Build it into your time table.

Exterior scanning struggles at some stage in bright afternoons with warmness shimmer. Plan facade paintings for morning or past due day. Heat waves distort lengthy-stove measurements. On windy days, circumvent long exposures. Scanning in July on a west-facing glass tower will prepare dinner your crew and degrade the outcomes. Night work helps however brings safeguard concerns. Crews need reflective equipment, cones, and coordination with construction administration and security.

During busy industrial cycles, Dallas vendors publication out weeks ahead. If you are expecting to obstacle submittals in a month, do now not wait until eventually the ultimate week to order scanning. Lock the vendor early and provide them a preliminary plan set. They can prebuild a registration approach and align deliverables with your BIM necessities. This upfront coordination prevents a scramble on the lower back cease.

## Risk, legal responsibility, and the satisfactory print

A point cloud is an discovered dataset with measurement uncertainty. It isn't a warranty. Contracts ought to reflect that. Clarify who owns the tips and whether it would be shared with subs and owners. Define the guaranty of features and the measurement tolerance. Require skilled legal responsibility insurance policy right to the scope. If the scanning agency adds units that your crew will rely upon for prefabrication, cost that their insurance coverage contemplates this use.

Change control happens more commonly. Field stipulations shift between scanning and deploy. Plan for rescan home windows. A half-day contact-as much as seize a new shaft minimize or a moved wall prevents mismatches that cascade by using save drawings. Vendors most commonly payment mobilization and minimal hours. Bundle those contact-united states of american which you'll to preclude numerous mobilizations.

Consider cybersecurity. If the undertaking consists of delicate tenants, save point clouds securely and limit distribution. Clouds can reveal safety digicam places, risk-free rooms, and server rooms. Users needs to have study-solely entry until proficient to deal with and clip datasets responsibly.

## Common pitfalls that charge time and money

The first is scanning too overdue. If your first experiment arrives after framing and predominant duct routes are devoted, it's going to only record mistakes. Scan early enough to persuade format and fabrication decisions, even if you happen to plan a second cross later for as-builts.

The 2d is soliciting for the entirety at LOD 350. You will drown your staff in detail and inflate coordination overhead. Target element where tight tolerances collide with restricted space.

The 0.33 is skipping manage. Even top-finish scanners glide over distance. Without survey ties, surface-to-surface alignment can slip simply satisfactory to create transform on stacks and shafts.

The fourth is ignoring occlusion. If you do no longer cast off ceiling tiles or clear storage, your cloud may have holes. You won't clash what you can't see. Coordinate with tenants and services to clear paths and open entry.

The 5th is underestimating lessons. Point clouds don't seem to be intuitive for all people. Spend an hour working towards the coordination lead and key superintendents on navigation, dimension, and clipping. Confidence rises sharply after that quick consultation.

## A Dallas case example

A contractor renovating two floors in a clinical administrative center constructing close to NorthPark had 3 surprises in the first week of demo: an sudden return plenum that ate treasured vertical area, a drifted column line by means of slab offsets, and a tangle of 1.5 inch conduit that veered right into a deliberate duct chase. We ordered a 3D Laser Scanning Service Dallas group for two in a single day periods. They got rid of decide on tiles, scanned plenums and corridors, and

tied every little thing to current survey control from the bottom development drawings. Three days later, the registered cloud landed. We sliced elevations at 10 foot intervals and powered using a coordination dash.

On the mechanical part, the fashion showed three inches of interference between a VAV field and a beam haunch. Rather than remodel a bay of duct, the staff flipped the VAV orientation and re-routed a short run with flex. Electrical shifted a conduit financial institution through two inches, protecting clear of the revised duct direction. The GC shunned a weekend shutdown by way of prefabbing an offset strengthen meeting validated towards the cloud. The scanning bill changed into around 12,000 dollars. The saved shutdown and RFI churn seemingly shunned 30,000 to 40,000 in check and at least per week at the agenda.

## **Selecting a spouse for 3D Laser Scanning Dallas**

Credentials rely, however deliverables count more. Ask for pattern tasks of similar scope and development model. Verify that the team makes use of survey handle when obligatory and that they'll supply registration reviews. Clarify modeling concepts and type usage in Revit. Confirm records handoff timelines and milestones tied for your procurement time table. If they are able to attend a coordination meeting to stroll as a result of the cloud and early fashions, even improved.

Local data supports. Firms that have scanned in Baylor's challenging, at DFW, or in legacy Downtown constructions have learned to navigate access, escorts, and protection. They also realize whilst to schedule round tenant hours and how to coordinate with building engineers who management rooftop get entry to and penthouse mechanical rooms. If your activity sits in a blended-use building with a lodge issue, ascertain the team understands low-noise standards and guest privacy.

Finally, scan responsiveness. Send a good scope, ask 3 or 4 considerate questions about management, occlusion, and modeling point, and spot how immediate and how exactly they answer. Enthusiasm is best. Precision topics more.

## **A simple listing earlier than you commission scanning**

- Identify the judgements the scan will aid. Prefab of duct and pipe, finding embeds, resolving ceiling congestion, or documenting as-builts for turnover.
- Define accuracy, regulate, and insurance plan. Write measurable aims and specify above-ceiling demands, surface depend, and tie-ins to survey.
- Lock deliverables. Point cloud codecs, Revit variant, LOD by way of approach, and any 2D sheets or clipped perspectives wished for trades.
- Set time table buffers. Allow time for scanning, registration, assessment, and modeling earlier than submittal deadlines.
- Plan subject access and safeguard. Badging, escorts, illness manage, lift use, ceiling tile elimination, and stale-hours coordination.

## **Looking forward with no getting distracted**

Technology keeps to conform. Handheld mappers lend a hand trap small rooms fast, although with decreased accuracy. Mobile scanners on carts quilt lengthy corridors at pace, positive for hospitals and faculties. Drone photogrammetry supports website grading and façade picture context. These equipment have their region, however for maximum maintenance and have compatibility-out work in Dallas, tripod-structured terrestrial scanning is still the professional backbone. It gives you the precision you desire for fabrication-grade judgements with no forcing you into unproven workflows.

The better shift is not hardware, it's far integration. When scanning moves from a rescue tactic to a deliberate step in preconstruction, groups spend less time arguing about what exists and greater time fixing problems. Owners note. Subs bid tighter due to the fact unknowns drop. And schedules get just a little more predictable in a metropolis that infrequently slows down.

If making a decision to interact a 3-d Laser Scanning Service Dallas service, treat it like any other commerce: demand clean scope, measurable exceptional, and aligned deliverables. Use the cloud to answer extraordinary questions, now not to drown your crew in information. Get the fundamentals good, and scanning turns into among the quieter, more secure tools for your undertaking, the type that can pay for itself and then disappears into the historical past even though the paintings strikes ahead.