

Winter in Clinton, Tennessee brings crisp mornings, outdoor frost, and the quiet danger of a plumbing emergency. Pipes that freeze and burst are probably the most preventable resources of household destroy, however they continue to be generic considering small oversights compound into immense issues. Whether you own a Fifties bungalow close downtown or a more modern build on the outskirts, the stairs you are taking earlier the 1st deep freeze will figure even if you spend a January weekend with a shovel, mop, and a mobile name to a plumber.

I spend winters responding to calls from house owners who proposal they had been insulated or "first-class because it not ever obtained that chilly beforehand." More traditionally than not I in finding regular avoidable themes: outdoors hose bibs left hooked up, attic vents that let bloodless air into source traces, and water warmers set too low. This marketing consultant gathers purposeful tips established on decades of area expertise, everyday failure modes for Clinton buildings, and really appropriate alternatives possible make good now to reduce possibility.

Why freezing pipes are so destructive

When water freezes it expands. In a closed pipe that expansion increases tension between the ice blockage and the closest closed valve, now not on the ice itself. That pressure causes pipes to crack or burst at vulnerable elements: joints, threaded fittings, or the thin partitions of copper or PVC tubing. A single burst can discharge one hundred to two hundred gallons consistent with hour prior to any one notices, and water harm at once includes insulation, drywall, ground, and personal property. The cleanup and repair, including drying, mould prevention, and plumbing reconstruction, is often far more expensive than the preventive measures listed below.

Common puts pipes freeze in Clinton homes

Clinton's winters are milder than mountainous areas, yet we get bloodless snaps that ultimate a number of nights. Pay consciousness to these susceptible parts:

- Exterior taps and hose bibs. Even a moderate residual water left within the line can freeze.
- Uninsulated basements and crawlspaces. Pipes run along outside partitions or by way of unheated cavities are at chance.
- Attics and cathedral ceilings. Supply lines that run across attic spaces with inadequate insulation are uncovered.
- Garage walls and garages without warmness. Pipes hooked up in partitions that sort the boundary to an unheated garage are prone.
- Interior partitions with deficient insulation where plumbing runs alongside the external wall.

Practical iciness prep list for Clinton homeowners

The following record is brief and aims the top-return movements to forestall freezing pipes. These are issues homeowners can do themselves straight away, plus presents in which calling a legitimate plumber in Clinton will store money and time.

1. Disconnect lawn hoses, drain and shut off external spigots.
2. Insulate purchasable pipes with foam sleeves, mainly in basements, attics, and garages.
3. Seal air leaks around holes the place pipes enter the home and round electric and dryer vents.
4. Let faucets drip throughout critical chilly to alleviate rigidity and maintain water shifting.
5. Consider including heat tape to inclined pipes and schedule a expert inspection.

Each of those pieces is simple, but success is dependent on doing them competently other than sporadically.

How to disconnect and organize outdoors spigots

This is one of the vital fastest preventive measures and one of the maximum straightforward mess ups I see in December. Leave a garden hose hooked up and water trapped within the line will become the ice that explanations a burst. Steps that work:

- Turn off the interior shutoff valve feeding the exterior faucet, in case you have one. Many properties have a valve in the basement by means of the utility wall.
- Open the external faucet and let it drain. Leave it open somewhat so any residual water can get away.
- If the spigot is a frost-loose sillcock classification, ascertain the vacuum breaker and packing nut are intact and the inside valve closes completely. If the spigot is vintage, change it in fall when nearby plumbers have greater availability.
- Remove hoses and save them in a garage or shed. Hoses left backyard additionally crack and turned into unusable if left to freeze.

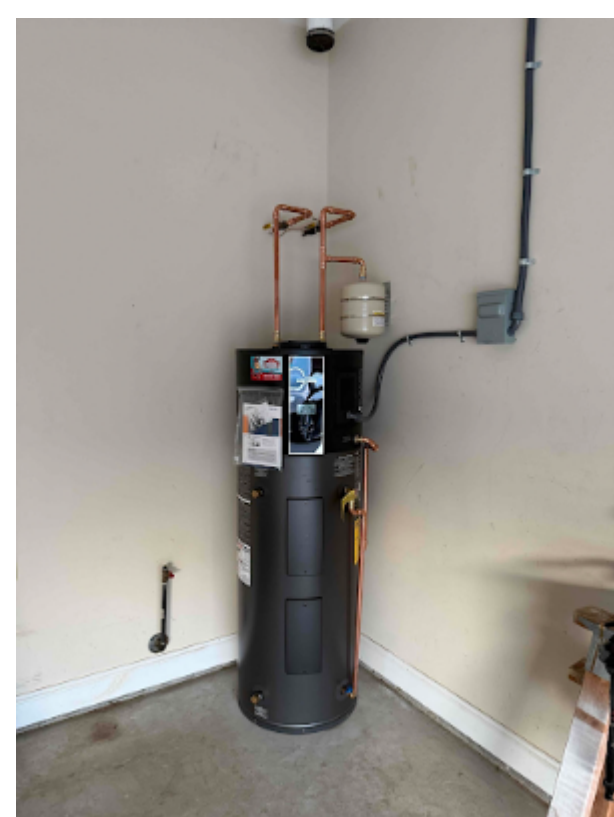
Insulation techniques that definitely work

Insulation is not a bandage, it truly is an extended-time period defense. I advocate a layered attitude. First, use foam pipe sleeves sized to the pipe diameter. They are reasonably-priced and undemanding to put in on exposed runs. Second, upload fiberglass insulation in basements and crawlspaces the place pipes run alongside outside partitions. If you might see light around a pipe in which it passes with the aid of a sill plate or rim joist, these penetrations must always be sealed with foam sealant and insulated.

For attic runs, attic ventilation is indispensable for roof overall healthiness but out of control drafts can relax pipes. Place insulation so it covers the good of the wall plates and extends less than the rafters where pipes run. If your house has copper pipes inside the attic, do not forget moving them or insulating them with closed-phone foam and including a small thermostatically controlled heat supply in critical eventualities.

Heat tape and electric solutions

Heat tape, utilized according to producer commands and with a thermostat, can evade a specific pipe from freezing. There are two principal varieties: self-regulating and steady-wattage. Self-regulating tape will increase warmth output as temperature falls and is broadly speaking more secure and extra powerful. Constant-wattage tape is more cost-effective but calls for careful recognition and will have to in no way be overlapped or used on pipes with degraded insulation.



If you select warm tape, all the time observe those rules: buy UL-indexed products, read and [plumber near me](#) practice the enterprise training, and update any tape that shows break or wear. For a small per thirty days check, adding local electrical resistance heaters to main issue spaces like crawlspaces or garages can hold the ambient temperature above freezing devoid of power waste.

What to do for the time of a freeze

When temperatures fall beneath 20 stages Fahrenheit for a variety of hours, take those activities. Let hot and bloodless taps drip at a gradual, regular trickle. This assists in keeping water transferring and reduces pressure buildup among a downstream ice blockage and a closed valve. Open cabinet doorways beneath sinks that sit opposed to outside walls to let hotter space air pass. Keep inner doors open to enable warm to transport because of the house.

Avoid riding open flames or space heaters close to pipes, insulation, or timber framing. If a small phase of pipe is frozen and that you may properly reach it, follow warm with a hair dryer, moveable space heater set at a protected distance, or hot towels. Never use a blowtorch or open flame on a pipe. If you observed a frozen pipe inside a wall or you won't be able to entry the part that froze, name a knowledgeable plumber in Clinton. Attempting to thaw inaccessible pipes with excessive heat can intent destroy or leap a fireplace.

Detecting a frozen pipe early

Some signs are visible: no water at a tap, a faucet that sputters and then runs slowly, or a lavatory in an effort to now not fill. Other signs are subtler: bloodless spots on partitions, frost on pipe surfaces, or a sudden spike on your heating bill if in case you have a boiler near a leaking pipe. If you get an unexplained water stain on a ceiling or wall for the period of a freeze, close off the major water supply as we speak and phone a plumber. Quick action reduces flood destroy and secondary mildew development.

When to call a plumber in Clinton

Homeowners can care for many preventive measures, however there are specified moments while a seasoned is the quality resolution. Call a Clinton plumber if:

- You can not detect the major shutoff or the shutoff is frozen or in bad condition.
- A pipe has ruptured, water is flowing out of control, and you desire emergency shutoff and mitigation.
- You have repeated freeze trouble even after insulating and taking moderate steps.
- You prefer a everlasting restore together with relocating uncovered pipes away from bloodless partitions or fitting conditioned space protections.

Tennessee Standard Plumbing and Drain and other native contractors typically recommend a winterization visit in past due fall. A educated technician will uncover vulnerable facets, test shutoffs, and propose specific upkeep that store cash over the years. Prices vary, but making an investment a few hundred dollars in corrective work prevents countless numbers in water spoil.

Upgrading old approaches: check, merit, and exchange-offs

Older homes are fascinating but ceaselessly have plumbing placed wherein state-of-the-art codes might now not enable it in these days. Replacing copper with PEX for sure runs should be would be could very well be a activity changer. PEX is more proof against bursting from freezing, and versatile runs are less difficult to route with the aid of conditioned areas. The problem is charge and the need to deliver procedures as much as code at some stage in variations. For many home owners the industry-off makes feel: plan a phased upgrade, starting with the such a lot susceptible runs.

Another improve to examine is installation an automated shutoff valve that journeys when a continuous flow indicative of a leak is detected. These methods selection from normal battery-powered contraptions less than a sink to complete-home, Wi-Fi enabled shutoffs so that you can shut the major valve and provide you with a warning as a result of telephone. The rate degrees from about a hundred to over 1000 cash, plus installing. For excursion houses or generally unoccupied homes, these units can stop catastrophic losses when pipes fail.

Water heaters and wintry weather readiness

Water warmers are imperative to wintry weather convenience and portion of the freeze danger snapshot. If your water heater is in an unheated or poorly insulated house, the chilly can rigidity the tank and connected piping. Insulate sizzling water pipes to minimize warm loss and save you floor condensation which will freeze. Set your water heater to 120 degrees Fahrenheit for average use; that balances safeguard, vigor use, and luxury. During severe cold, a a bit of upper set point can assist retailer traces heat, however seek advice from a pro once you contemplate expanding the temperature seriously.

Tennessee Standard Plumbing and Drain

Address: 210 N Charles G Seivers Blvd Suite 300, Clinton, TN 37716

Phone: (865) 409-0354

<https://maps.app.goo.gl/47GigwE5HrGKCvg7A>

If your water heater is older than 10 to twelve years, review substitute earlier than a significant cold snap. A failing tank can leak at seams at some stage in freeze-thaw cycles. Modern tanks and tankless units are greater efficient and, in a few circumstances, superior located within conditioned area to preclude freeze risks.

Realistic expectations for non permanent fixes

I even have noticeable householders depend on momentary measures that supply fake safety. Cosmetic caulk round a rim joist might appear tidy but does now not forestall air infiltration that chills within sight pipes. Wrapping a pipe in a single layer of material or towels would possibly extend freezing with the aid of a few hours yet will no longer be risk-free over a multi-day cold snap. Think of winter prep as a prioritized checklist: begin with disconnecting external taps, locate and label shutoff valves, insulate uncovered traces, after which invest in more everlasting fixes like relocating pipes or adding warmth tape wherein suited.

Case learn: a Clinton break up-point that virtually flooded

A few winters in the past I become which is called to a cut up-stage near Anderson County High School. The house owners had a spigot attached to a hose and a gradual drip from a 2d-floor bog that had gone omitted. Two days of subfreezing nights triggered an external line to freeze and burst at a joint. By the time the house owner got dwelling house the primary point had 3 inches of water in a single bed room, and the helper pump in the storage become crushed. The cleanup and recovery, together with eliminating floor and partial drywall substitute, surpassed \$12,000.



What went mistaken changed into not a single missed object however a chain of small oversights. The spigot had a lacking indoors shutoff, the home-owner assumed the hose would drain because the backyard sloped away, and the leak were gradual sufficient to be exhausting to realize. The lesson: pursuits seasonal checks and labeling valves should have avoided the ruin.

Seasonal timing and preservation schedule

Take action in past due October or early November for most fulfilling results. That gives you time to schedule a licensed plumber prior to wintry weather workloads surge and to check strategies across a number of nights that dip near freezing. Create an annual list: disconnect hoses, attempt exterior valves, examine insulation, test shutoffs and pressure reduction valves, and agenda a plumber for any repairs or upgrades. Keeping a basic log with dates and what you did makes it more convenient whilst promoting a space or diagnosing routine problems.

Final functional hints and industry-offs

Prioritization subjects. If finances is confined, cognizance on those prime-have an effect on gadgets: outside spigots, leading shutoff position and purpose, and insulation for pipes on external partitions. Heat tape and electric warmers remedy distinctive problems yet have ongoing electricity quotes and require careful install. Pipe relocation, at the same time expensive up-entrance, addresses the basis result in and reduces long-time period upkeep. For many Clinton house owners, a hybrid method works most desirable: cheaper DIY measures mixed with a unmarried legitimate stopover at to fix the trickiest vulnerabilities.

If you need assist, look for a plumber close me who is approved and insured, ask for references distinct to winterization paintings, and request an itemized estimate. Local carriers like Tennessee Standard Plumbing and Drain are known with Clinton residences and native chilly patterns, and they're able to suggest whether or not your private home needs elementary insulation, rerouting, or greater complex controls like computerized shutoffs.

Winter preparedness is layered, no longer heroic. A few hours of thoughtful paintings in autumn prevents the stress of an emergency in January. Take the time to walk your house with a record, invest within the maximum inclined fixes first, and contact a trusted Clinton plumber for anything else past general DIY. Preventing frozen pipes is regularly approximately cognizance to detail and a bit of foresight, and people small investments pay dividends in peace of brain and evaded maintenance.